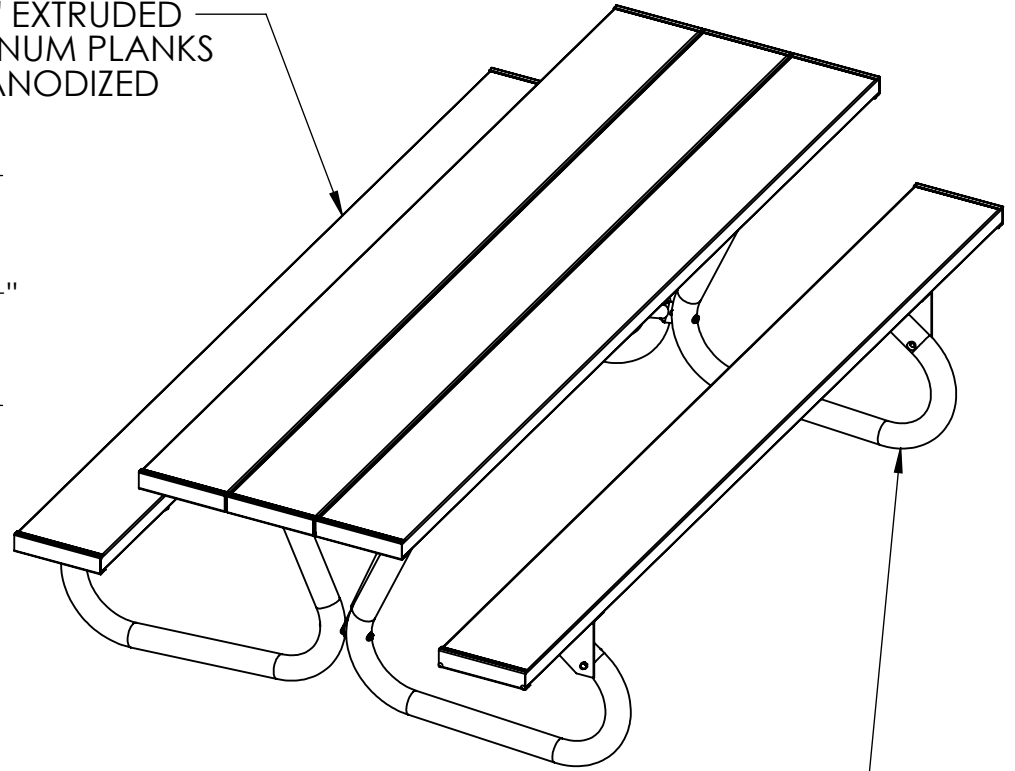
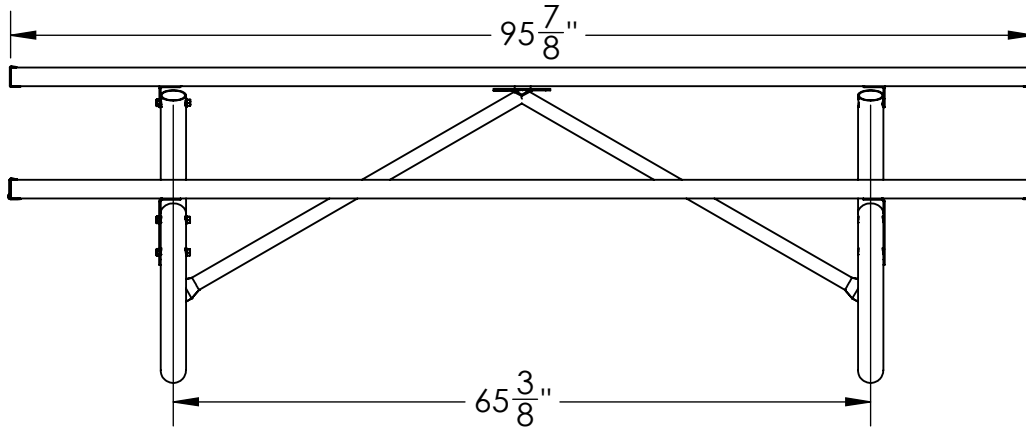


2"X 10" EXTRUDED
ALUMINUM PLANKS
WITH ANODIZED
FINISH

TABLE RESTS ON 4 OUTSIDE
CORNERS TO HELP PREVENT
ROCKING ON UN-EVEN GROUND

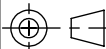


2 3/8" O.D. GALVANIZED LEGS



GENERAL NOTES

DIMENSIONS ARE IN INCHES
TOLERANCES: LINEAR: $\pm 1/16$
ANGULAR: $\pm 1^\circ$



CONFIDENTIAL DRAWING.
INFORMATION IS NOT TO BE COPIED OR
DISCLOSED TO OTHERS WITHOUT
CONSENT OF KAY INDUSTRIES.
SPECIFICATIONS SUBJECT TO CHANGE
WITHOUT NOTICE.

SHEET SIZE

A

SCALE

1:18

REV



Kay Park Rec.

DRAWN BY

JNB

7/18/2017

DESC:

8' BG TABLE W/ ALUM. PLANKS

APPROVED

MATL:

LAST SAVED

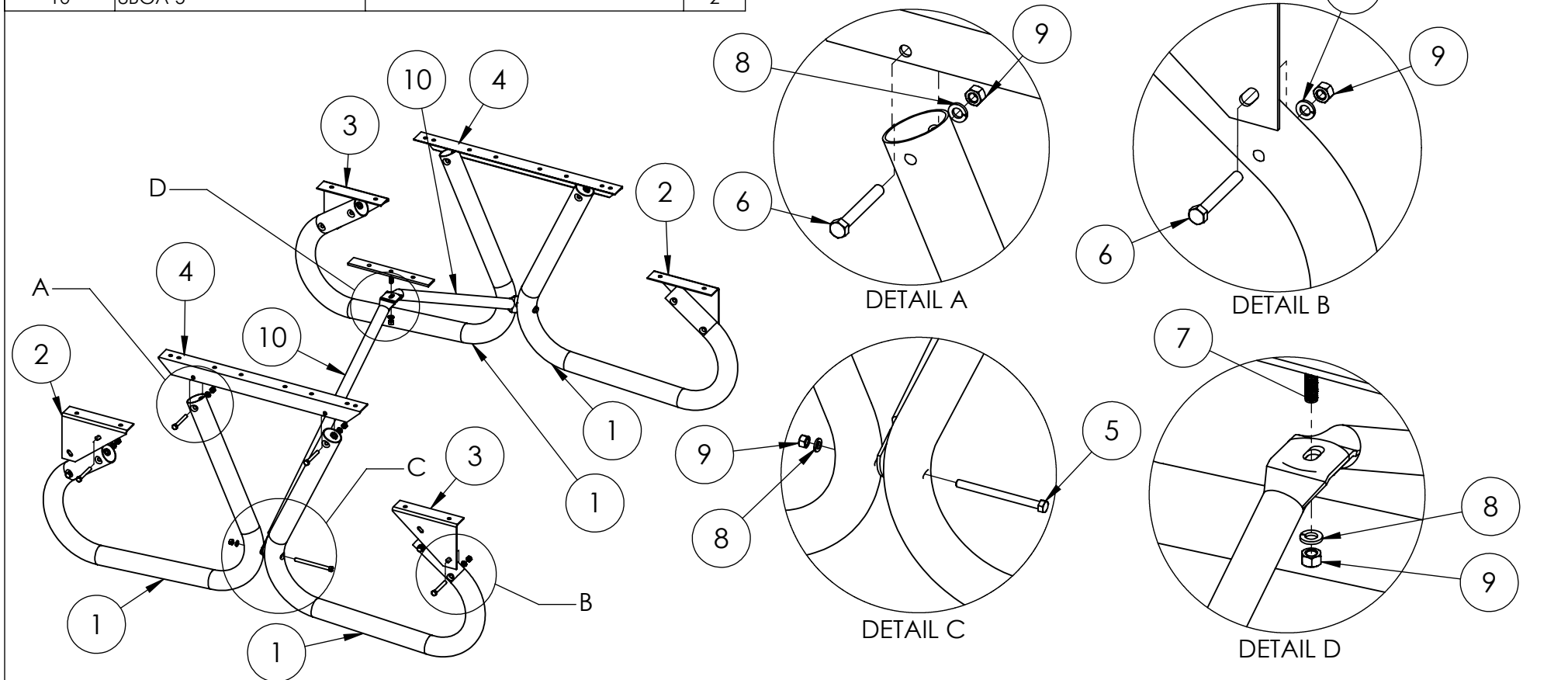
davet

9/21/2017

PART NO: 82BGA

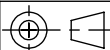
ITEM NO.	PART NUMBER	DESCRIPTION	QTY.
1	2BG-1	2BG LEGS 2' PS GALV 2 3/8" O.D. .109 WALL	4
2	2BG-3L	2BG SEAT CLEAT LEFT	2
3	2BG-3R	2BG SEAT CLEAT RIGHT	2
4	1BG-2	BG and 2BG TOP CLEAT	2
5	HBOLT 0.3750-16x4.75x1-N	3/8"-16x 4 3/4" HEX HEAD BOLT	2
6	HBOLT 0.3750-16x2.75x1-N	3/8"-16x 2 3/4" HEX HEAD BOLT	6
7	IPTA-6	CENTER SUPPORT CLEAT WITH STUD	1
8	Regular LW 0.375	LOCK WASHER 3/8"	8
9	HNUT 0.3750-16-D-N	HEX NUT 3/8"-16	8
10	8BGA-5		2

- 1.BOLT THE LEGS TOGETHER AS SHOWN WITH THE BRACE BETWEEN THE LEGS, AND THE TOP ANGLE AND SEAT ANGLES FACING INWARD. NOTICE THERE IS A LEFT AND RIGHT SEAT ANGLE . ATTACH APPROPRIATELY.
- 2.LAY THREE PLANKS ON THE GROUND CLOSE TOGETHER.
PUT HOLD DOWN CLIPS INSIDE THE PLANK
3. PLACE A SET OF LEGS UPSIDE DOWN. PUT BOLTS THROUGH HOLD DOWN CLIP AND TIGHTEN WITH FLANGE NUTS. REPEAT FOR THE OTHER END OF THE TABLE. MAKE SURE THE TOP ANGLES FACE INWARD.
- 4.ATTACH THE CENTER CLEAT WITH STUD THE SAME WAY.
- 5.FLIP THE TABLE OVER AND ATTACH THE SEAT PLANKS IN THE SAME FASHION
- 6.ATTACH END CAPS AS SHOWN ON PAGE 3



GENERAL NOTES

DIMENSIONS ARE IN INCHES
TOLERANCES: LINEAR: $\pm 1/16$
ANGULAR: $\pm 1^\circ$



CONFIDENTIAL DRAWING.
INFORMATION IS NOT TO BE COPIED OR
DISCLOSED TO OTHERS WITHOUT
CONSENT OF KAY INDUSTRIES.
SPECIFICATIONS SUBJECT TO CHANGE
WITHOUT NOTICE.

SHEET SIZE

A

SCALE

1:18

REV



Kay Park Rec.

DRAWN BY

JNB

7/18/2017

DESC:

8' BG TABLE W/ ALUM. PLANKS

APPROVED

MATL:

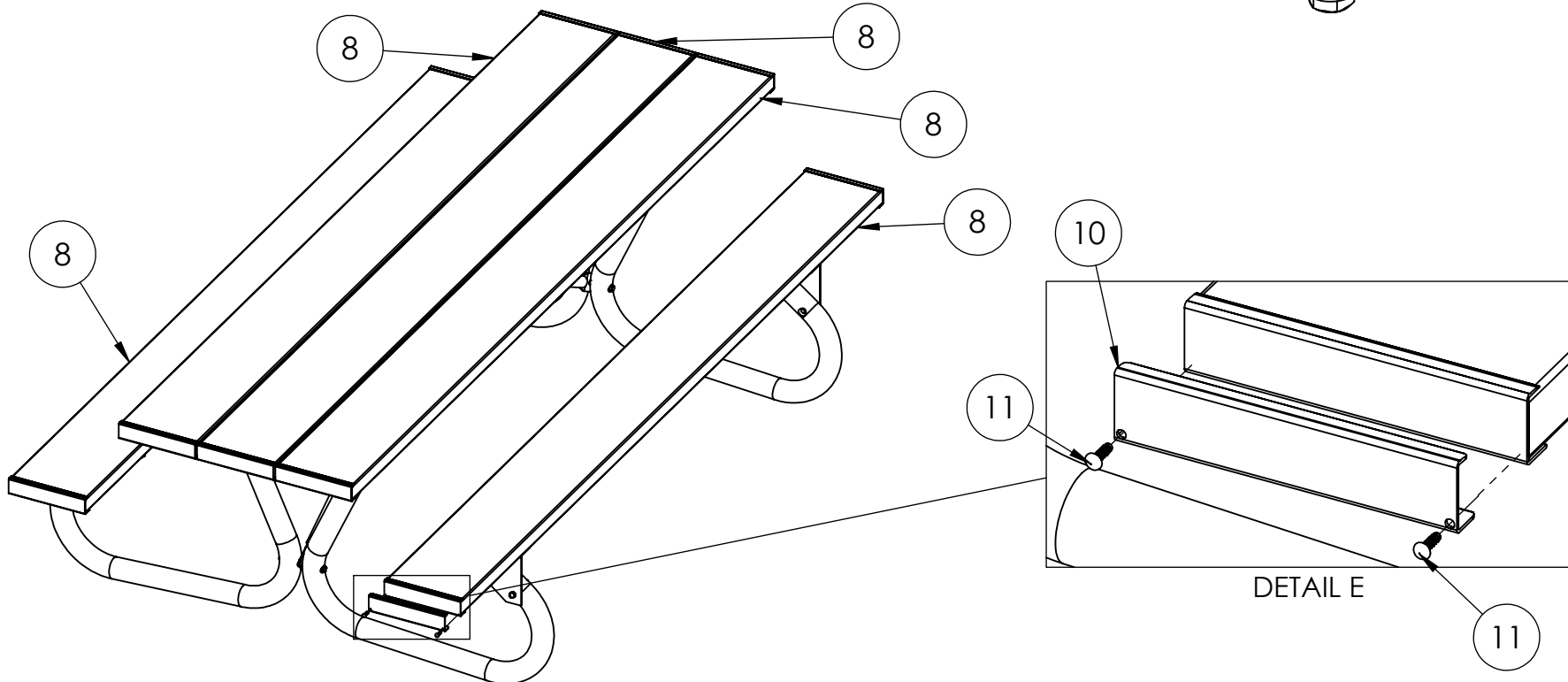
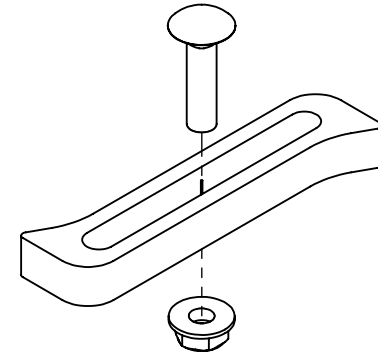
LAST SAVED

dave1

9/21/2017

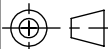
PART NO: 82BGA

ITEM NO.	PART NUMBER	DESCRIPTION	QTY.
1	2BG-1	2BG LEGS 2" PS GALV 2 3/8" O.D. .109 WALL	4
2	2BG-3L	2BG SEAT CLEAT LEFT	2
3	2BG-3R	2BG SEAT CLEAT RIGHT	2
4	1BG-2	BG and 2BG TOP CLEAT	2
5	HBOLT 0.3750-16x4.75x1-N	3/8"-16x 4 3/4" HEX HEAD BOLT	2
6	HBOLT 0.3750-16x2.75x1-N	3/8"-16x 2 3/4" HEX HEAD BOLT	6
7	IPTA-6	CENTER SUPPORT CLEAT WITH STUD	1
8	8IA-7	2"x 10" SEAT PLANK 95 7/8" ANODIZED	5
9	8BGA-5	1 5/16" OD TUBE BRACE	2
10	IA-10	ALUM 2x10 END CAPS 9 1/8"	1
11	DRIVES-3/4	DRIVE SCREW 3/4"	2
12	Regular LW 0.375	LOCK WASHER 3/8"	8
13	HNUT 0.3750-16-D-N	HEX NUT 3/8"-16	8



GENERAL NOTES

DIMENSIONS ARE IN INCHES
TOLERANCES: LINEAR: $\pm 1/16$
ANGULAR: $\pm 1^\circ$



CONFIDENTIAL DRAWING.
INFORMATION IS NOT TO BE COPIED OR
DISCLOSED TO OTHERS WITHOUT
CONSENT OF KAY INDUSTRIES.
SPECIFICATIONS SUBJECT TO CHANGE
WITHOUT NOTICE.

SHEET SIZE

A

SCALE

1:18

REV



Kay Park Rec.

DRAWN BY

JNB

7/18/2017

DESC:

8' BG TABLE W/ ALUM. PLANKS

APPROVED

MATL:

LAST SAVED

davet

9/21/2017

PART NO: 82BGA