

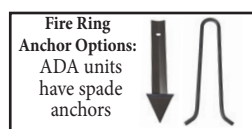


FR30 Fire Ring

- 300 Sq. Inch Cook Surface 15"x20"
- 1/2" Rods on 1" Centers
- 30" Diameter
- 3/16" Thick Steel
- "TB" = tilt back hinges
- "SAS" = spade anchors
- Cool Spring Handles
- 4 Heights Available
- High Heat Black Enamel Paint

FR730TB	7" High tilt back staples	69 Lbs
FR730SAS	7" High spade anchors	74 Lbs
FR930TB	9" High tilt back staples	88 Lbs
FR930SAS	9" High spade anchors	95 Lbs
FR1130TB	11" High tilt back staples	105 Lbs
FR1130SAS	11" High spade anchors	116 Lbs
FR1830WCSAS	18" High Sides ADA Compliant fire ring	130 Lbs

Flip - Up Grate,
Flips out of the way!



ADA Unit

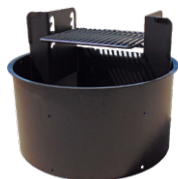
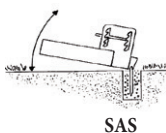
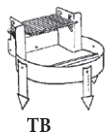
30" Diameter



AFG80 Fire Ring

- 300 Sq. Inch Cook Surface 15"x20"
- 1/2" Rods on 1" Centers
- 34" Diameter
- 6" High Sides (18" High Sides for ADA)
- 4 Adjustable Cooking Heights
- Reinforcing Angle Across Pit
- Cool Spring Handles
- Vandal Resistant
- High Heat Black Enamel Paint
- AFG80WCSAS is ADA compliant

AFG80TB	AFG80 Tilt back staples	86 Lbs
AFG80SAS	AFG80 Spade anchors	91 Lbs
AFG80WCSASR	ADA Compliant fire ring	167 Lbs



ADA Unit

34" Diameter



Swivel Grate Fire Ring

- 32" Diameter
- 300 Square inch cooking grate
- Cooking grate rotates 180 degrees
- 9" height
- Tilt back staples
- Made from 3/16" steel
- High Heat Black Enamel Paint

FR930SWTB	Swivel Grate	84 Lbs
------------------	--------------	--------

DOUBLE WALLED FIRE RING

- 370 Sq. Inch Cook Surface 15"x20"
- 1/2" Rods on 1" Centers
- 30" Diameter
- 18" Height
- 3/16" Thick Steel
- "SAS" = spade anchors
- Cool Spring Handles
- Double Wall
- High Heat Black Enamel Paint

FRDW1830TB	DOUBLE WALL	186 Lbs
-------------------	-------------	---------



Recommended for any public picnic grounds where charcoal grills are being used!

Steel Coal Ash Receptacle

- 23" Square top funnels to 12"
- Holds 32 gallon trash
- Or let coals fall to concrete slab
- Black Powder Coat Finish

KPHCB	23" Square Recept.	90 Lbs
CG32HDNL	32 Gal Galv. Can 25 gauge	15 Lbs
KPHCBMS	Surface mount	5 Lbs
KPHCBANCH	Ground Anchors	3 Lbs



Promote Fire Prevention

Hot Ash Receptacle

- 22"sq. x 35" tall
- Welded steel bars on top
- Select color and texture when ordering

CHAR2235	650 Lbs
-----------------	---------

Concrete Options:

Concrete colors and aggregate textures.

	Smooth	Light Sand Blast	Perma Stone	Dura Brite
Dove Gray				
Terra Cotta				
Light Brown				
Sand Tan				

Select Texture: Smooth, Light Sand Blast, Perma Stone or Durabrite
 Select Color: Dove Gray, Terra Cotta, Light Brown or Sand Tan



Ash Shovel

ASHSHOVEL	Ash Shovel	1 Lbs
------------------	------------	-------



WARNING: Cancer and Reproductive Harm www.P65Warnings.com



Recycled Plastic

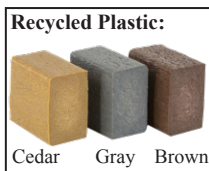
132 LR Series

- 32 gal each
- Engraved tops
- 2" x 4" slats available

Frame Only
Southern Yellow Pine Slats
Recycled Plastic Slats



Southern Yellow Pine Slats



Cedar Gray Brown



CP32 11 Lbs
CG32 13 Lbs
CG32LID 3 Lbs

Freestanding

132LRP 36 Lbs
132LRSYPP 98 Lbs
132LRRPP 102 Lbs

Surface Mount

132LRSM 39 Lbs
132LRSYPSM 111 Lbs
132LRRPSM 105 Lbs

In Ground

132LRIG 42 Lbs
132LRSYPIG 114 Lbs
132LRRPIG 108 Lbs



Plastic Dome Lid
DLMP32-55
24" ID, 10 Lbs
\$105.00

Plastic Dome Colors:



Red Yellow Blue Green Gray Brown Black



Galvanized Dome Lid
DLG55
23 3/4" ID, 12 Lbs
\$191.00

Best Selling Litter Receptacle



Triple Square Bin Recycling Center

- 96 Gallon Total
- 32 gal each
- Engraved tops
- 1" x 4" slats available
- Gray, Cedar and Green
- Heavy-Duty Zine Coated Hardware
- Liners sold separately

JP3SRC 3-Square Bins 230 Lbs
JP32LINER 32 gal. Liner 6 Lbs

Recycled Plastic:



Cedar Gray Green



Square Bin Recycled Plastic Recycling Container

- 32 gal
- Engraved tops
- 1" x 4" slats
- Gray, Cedar and Green
- Liners sold separately
- Specify - Glass, Cans, Bottles Paper, Plastic, etc.
- Place multiple squares side by side to create a recycling center

JP32SRC 32 Gallon Receptacle 90 Lbs
JP32LINER 32 gal. Liner 6 Lbs



Recycling Do Your Part
Keep It Green

Bear Proof Can

Problem with bears or animals, this receptacle is designed and tested to keep bears and other animals out of the trash.

- Heavy duty 12 and 14 gauge formed steel
- Front door design for liner access
- 36 Gallon liner included
- Powder Coated in Brown Only
- 16 inch square top hatch
- Lid and door are self-latching
- Reinforced door on full length hinge

KBPBR36 36 Gallon 165 Lbs



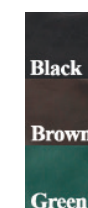
Tippy Trash

- 52 Gallon
- 2-3/8" O.D.
- Powder Coated Steel
- Unlock and tip
- Custom lettering on solid band
- Black, Brown, or Green
- Lids Sold Separately

TT52IG 52 Gal. In Ground 110 Lbs
TT52SM 52 Gal. Surf. Mt 100 Lbs
TT52LID 27 Inner Dome Lid 12 Lbs

EZ-EMPTY!

52 Gallon
Unlock, Tip and Go!



Steel Mesh Basket

Designed to withstand constant use and harsh weather conditions. See-through mesh means they don't blow over easily in strong winds and the tapered design permits nesting for storage. These baskets will hold up to 52 gallons of trash in a light weight basket which is ideal for high traffic area where trash must be emptied often. These units feature reinforced steel edges and bottom drain holes. Specify your choice of galvanized (silver), or powder coat (C) color (green, red, black, or blue) when ordering. 23" O.D. at top.

SMTB52 52 gal. galv. mesh basket 31 Lbs
SMTB52C 52 gal. pc. mesh basket 31 Lbs



DLMP3255 lid fits this model. See page 33



TUFFCAN Round 42 Gallon

- 42 Gallon
- 25" Diameter
- Virtually Indestructible
- Beige Granite
- Light Granite or
- Dark Granite

TC42LRD	42 Gal. Dome Top	25 Lbs
TC42LRH	42 Gal. 10" Hole Top	25 Lbs

Shown in
Light Granite



Shown in
Beige Granite

TUFFCAN Square, w/Dome Lid

- 32 Gallon
- 18"x18"x38"
- Rigid molded resin
- Complete with hole top
- Unique slatted appearance

TC32LRD	32 Gal. w/Dome Lid	31 Lbs
----------------	--------------------	--------



*Rigid Molded Resin:
Unique & Durable*



Shown in
Dark Granite

TUFFCAN Square 32 Gallon

- 32 Gallon
- 18"x18"x38"
- Rigid molded resin
- Complete with hole top
- Unique slatted appearance

TC32LRH	32 Gal. w/Hole Top	25 Lbs
----------------	--------------------	--------



Vinyl Plastisol 32 Gallon Receptacle

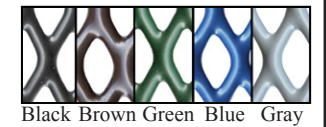
Choose other items from our vinyl plastisol line for a complete look. Choose colors to go with any design or choose school colors to show school spirit.

- 32 Gallon
- 3/4" No 9 Expanded Metal
- Heavy PVC Coating, UV and Mildew Resistant
- Choose Portable, Surface Mount or In Ground Mount
- Available in several colors
- Lids and liners sold separately
- Two Piece Design

132LRVP	32 Gal. Freestanding	70 Lbs
132LRVPIG	32 Gal in ground	70 Lbs
132LRVPSM	32 Gal surface mount	70 Lbs



Quality Thick
Vinyl Plastisol:



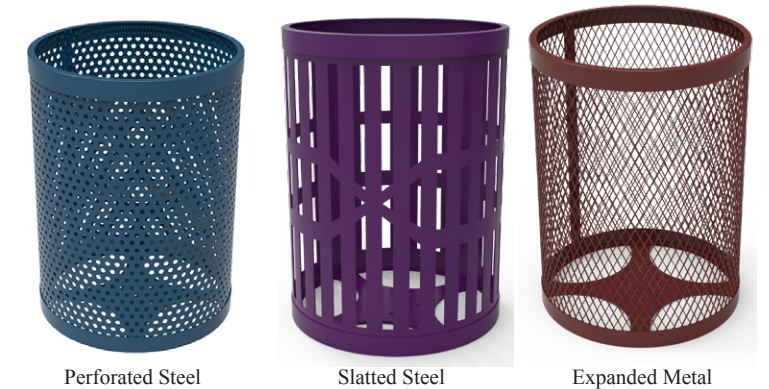
WARNING: Cancer and Reproductive Harm www.P65Warnings.com

Thermoplastic 32 Gallon Receptacles

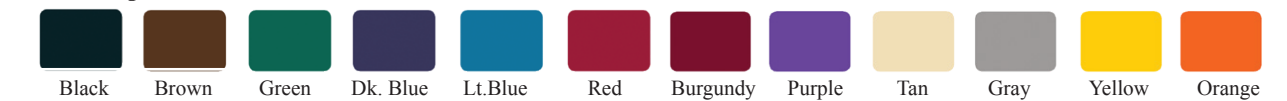
A great option to match you school colors or make our playgrounds more colorful.

- Comes Standard as Portable
- In Ground and Surface Mount kits available
- 1/2" Perforated
- Slatted Steel
- Expanded Metal
- Lids and Liners Sold Separately

MCPS32LR	Perforated 32 Gal.	81 Lbs
MCSS32LR	Slatted Steel 32 Gal.	110 Lbs
MC32GALEXP	Expanded Metal 32 Gal.	70 Lbs



Thermoplastic Colors:





Indoor or Outdoor Litter Receptacle

Standard Recycle Series

Standard Recycling Collection offers the durability of perforated steel recycling receptacles with laser-cut chasing arrows recycling symbol to promote "Recycle Here" sustainability. Protective coated bases are featured as standard on 35 and 55-gallon receptacles.

- Leveling feet, lid kit, and anchor kit are provided at no extra cost with 35 and 55-gallon receptacles
- Standard hood top, with round opening of 4.5" and slot opening of 2" x 7"
- SRS55LR is available with two 25-gallon plastic liners or one full 55-gallon liner
- SRS35LR is available with one full-gallon liner
- Comes in Blue
- Other lid combinations available online.

SRS35LR	35 Gallon	45 Lbs
SRS55LR	55 Gallon	91 Lbs

Half Round Indoor Litter Receptacle

The perfect modern option for any indoor venue. The half-round receptacle allows this receptacle to be set against the wall without losing any space.

- Comes standard with a flat back for tight, space-constrained locations
- Select from two available finishes: stainless steel and powder-coated black
- Crafted with durable steel
- Includes reusable recyclable plastic liner for maximum efficiency and durability

HR9GALBK	Black	18" x 8.5" x 32"	17 Lbs
HR9GALSS	Stainless Steel	18" x 8.5" x 32"	17 Lbs

Sawgrass Outdoor Receptacle

Add a modern spin to any area. Great for schools, cities, libraries, malls, and any other outdoor facilities. This unit is galvanized steel with a powder-coated finish. Servicing is easy with the lift-off top. A lid attachment kit and an anchor kit are supplied with all units at no extra charge.

- Comes standard with built-in leveling feet
- Durable plastic liner is included
- Color choice includes powder-coated black, brown, green, or silver

SAW40LRSWT	82 Lbs
-------------------	--------

GeoCube Indoor Receptacle

The perfect receptacle for indoor recycling and waste disposal. Choose the lid, size, and color option that works best for you. Can be used anywhere; apartment complexes, malls, airports, office complexes, convention centers, and more.

- Mix and match the GeoCube line for unique recycling combinations
- Available in five colors: blue, charcoal, scarlet, slate, and green
- Equipped with bag holder to make servicing quick and easy
- Optional rigid plastic liners are available

SRC28RO	(Round Opening)	28 Gallon	27 Lbs
SRC28SO	(Slot Opening)	28 Gallon	27 Lbs
SRC28WO	(Waste Opening)	28 Gallon	27 Lbs
SRC28CO	(Combo Opening)	28 Gallon	27 Lbs
SRC32RO	(Round Opening)	32 Gallon	31 Lbs
SRC32SO	(Slot Opening)	32 Gallon	31 Lbs
SRC32WO	(Waste Opening)	32 Gallon	31 Lbs
SRC32CO	(Combo Opening)	32 Gallon	31 Lbs
SRC36RO	(Round Opening)	36 Gallon	34 Lbs
SRC36SO	(Slot Opening)	36 Gallon	34 Lbs
SRC36WO	(Waste Opening)	36 Gallon	34 Lbs
SRC36CO	(Combo Opening)	36 Gallon	34 Lbs

Space-efficient receptacles for recycling



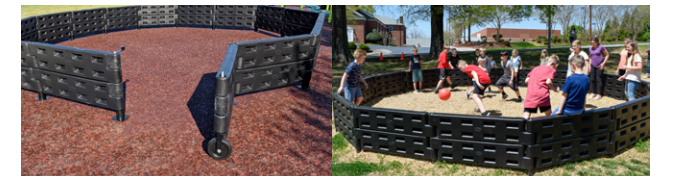
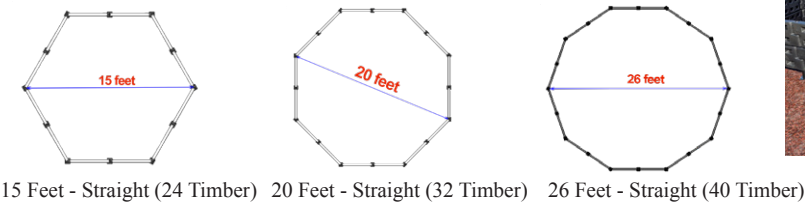
Each lid comes with one each of the following decals
 - Round Opening: "Cans" and "Bottles"
 - Slot Opening: "Paper" and "Recycle"
 - Square Opening: "Waste" and "Recycle"
 - Combo Opening: "Recycle" (two each)
 - Optional "Plastic" and "Glass" available on request

GaGa Pits

GaGa Pits is a sport for all ages and abilities similar to dodgeball. GaGa translates to "touch-touch" in Hebrew, and the game is thought to have originated in Israel. GaGa's popularity has continued to rise in the US and is extremely popular at camps, schools, and playgrounds everywhere!

- 3 sizes of GaGa Ball Pits for indoor or outdoor use.
- ADA Gate
- Coated for durability.
- 28" high allowing for maximum ball rebound and consistent play
- Stanchion design allows each wall of the Gaga Ball Pit to be Raised 4" for easier cleaning of debris.

GAGAPIT15	15 Ft. - Straight (24 Timber)	305 Lbs
GAGAPIT20	20 Ft. - Straight (32 Timber)	370 Lbs
GAGAPIT26	26 Ft. - Straight (40 Timber)	465 Lbs

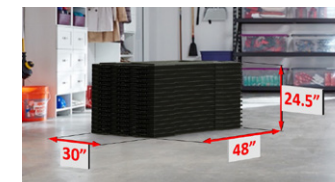


GaGa Portable Pits

GaGa2Go is portable, easy to install and dismantle, and stores neatly in a 30" x 48" x 25" area. Requiring no hardware, GaGa2Go is the perfect answer for indoor and/or temporary use for schools, churches, camps, and more. Looking to move up from that backyard swingset your kids have outgrown? GaGa2Go is perfect for residential use in garages, basements, driveways, and anywhere you want to have fun!

GAGATOGO	20' GaGa Pit when assembled	285 Lbs
-----------------	-----------------------------	---------

- Easy to install
- No hardware required
- Portable
- Panels nest for easy storage
- 16 Panels, 12 Pound Each
- 20' GaGa Pit when assembled



Triple Shoot

TripleShoot, A is an update to an old classic. Provide your customers with unparalleled play value by entertaining multiple children at one time. This comes in ground only and is for use on grass surfaces. Available in orange and green.

Triple Shoot	TripleShoot with a 7' pole	70 Lbs
---------------------	----------------------------	--------





CTCR30MD

Has a brown plastic dome lid with self-closing door. Shown as Sand Tan Durabrite.

	Lbs
CTCR30MD 24" dia x 43"	420
CTCR30PL 30 Gal. liner	12



CTCS22PB & CTCS40PB

Holds a liner up to 22 gal. At 40" h (to top of dome) x 20 1/2" square & has a rigid plastic bonnet top with a self-closing door. Shown in Sand Tan Durabrite. Larger, 40 gallon size model also available.

	Lbs
CTCS22PB 22 Gal. unit	400
CTC20PL 20 Gal. liner	11
CTCS40PB 40 Gal. unit	740
CTC36PL 36 Gal. liner	13



CTCR30PH

Has a dark brown rigid plastic hood top open on two sides. Shown in Sand Tan Durabrite.

	Lbs
CTCR30PH 26 1/4" dia x 44"	700
CTCR30PL 30 Gal. liner	12



CTCR30AR

Has a concave pitch in top. Shown in Light Brown Permastone.

	Lbs
CTCR30AR 24" dia x 33"	640
CTCR30PL 30 Gal. liner	11



CTCR22FP/30FP

Two pieces fit together with brown fiberglass pitch in top.

	Lbs
CTCR22FP 21" dia x 33"	300
CTCR20PL 20 Gal. liner	11
CTCR30FP 31" dia x 33"	870
CTCR30PL 30 Gal. liner	12



CTCR30AP

Has a convex spun aluminum pitch in top. Shown here in Sand Tan Permastone.

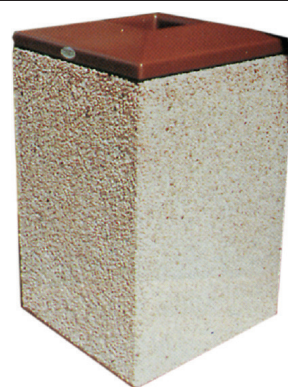
	Lbs
CTCR30AP 24" dia x 33"	420
CTCR30PL 30 Gal. liner	12

Concrete Options:

Concrete colors and aggregate textures.

	Smooth	Light Sand Blast	Perma Stone	Dura Brit
Dove Gray				
Terra Cotta				
Light Brown				
Sand Tan				

Select Texture: Smooth, Light Sand Blast, Permastone or Durabrite
Select Color: Dove Gray, Terra Cotta, Light Brown or Sand Tan



Popular Square

Features a brown pitch in top and is available in 2 sizes: 22 gal unit is 36" high x 22" square, 30 gal. unit is 30" high x 26" wide x 29" long. Shown in Sand Tan Permastone. (22 gal top is plastic, 30 gal top is fiberglass.)

	Lbs
CTCS22FP 22 Gal. unit	620
CTC20PL 20 Gal. liner	11
CTCS30FP 30 Gal. unit	870
CTC30PL 30 Gal. liner	12

Round Concrete Table

A modern design with four surrounding seats offers great aesthetics and practicality for patios, food service, etc. It's heavily reinforced concrete construction is very durable. Comes with smooth top and seat surfaces, as well as smooth legs. Available in Sand Tan, Dove Gray, Light Brown, and Terra Cotta. Dedication plaques and logos also available, please inquire. Shown in Dove Gray

CTR4S Round 66" L x 30" H x 68" W	1040 Lbs
CTR3ADA ADA Accessible	900 Lbs
UMBRKT Umbrella bracket option	



Square Concrete Table

Perfect for dressing up a patio or courtyard. Made of strong steel reinforced concrete. Top and seats have protective sealer to assure years of service. Two and four seat models available. Ask about umbrella attachment option. Choose a combination of color and texture to best suit your decor. Photo shows Sand Tan tops and seats with Sand Tan Permastone legs.

CTS4S 4 seat sq 67 1/2" L x 29" H x 67 1/2" W	1,040 Lbs
CTS2S 2 seat sq 30" L x 29" H x 66" W	640 Lbs
UMBKT Umbrella bracket option	



CTR Rectangle Table

"The good old standby." These tables have a combination of beautiful exposed aggregate legs and smooth colored tops and seats to enhance surroundings with a look of natural beauty. You choose the texture and color to best match your decor. SMOOTH CONCRETE tops and seats with color all the way through come in 60" and 84" lengths. A handicap model is also available with the top extended at one end. Shown with Light Brown top and seats and Light Brown Durabrite Legs.

CTRJ60C Standard 60" L x 29" H x 62" W	1,040 Lbs
CTRJ84C Standard 84" L x 29" H x 62" W	1,128 Lbs
CTRJ84H Handicap 84" L x 29" H x 62" W	1,028 Lbs



Concrete Oval Top Tables

A contemporary look along with a walk through design perfect for almost any setting. Shown with Sand Tan Light Sandblast legs and smooth top and seats. Choose any color for your tables from the selection. Two sizes available. Handicap unit has one end extended to allow for wheelchair.

CTOV72 72" L x 30" H x 60" W oval table	1,400 Lbs
CTOV84 84" L x 30" H x 60" W oval table	1,600 Lbs
CTOV84H 84" L x 30" H x 60" W oval table	1,600 Lbs

Game Board Option

Permanent insert for concrete table tops. Provide the fun!

GBI





Windsor Select

Is a line of fine quality site amenities for indoor or outdoor use. The recycled plastic slats are 2" x 3" to create a finer, more elegant look. Slats are attached from the back side using stainless steel fasteners. Recycled plastic is UV protected and will maintain its good appearance for many years with little or no maintenance. Colors are Gray, Cedar, Brown, or Redwood. Please specify when ordering. Recycled plastic is steel reinforced where needed to avoid sagging. All frames are powder coated black.

Windsor Lumbar Comfort Bench

WS4LCBRP	4' Lumbar bench	189 Lbs
WS6LCBRP	6' Lumbar bench	213 Lbs
WS4LCBRPIG	4' In Ground Lumbar	199 Lbs
WS6LCBRPIG	6' In Ground Lumbar	223 Lbs
ARCB	Armrest (set of two)	18 Lbs

Windsor Flat Bench

Both the lumbar comfort and flat benches utilize 2"x3" slats which come in recycled plastic colors of cedar, brown, gray, or redwood. The gentle curve of the lumbar comfort feels so good you will almost hear the sighs of relaxation. Plan for comfort along with a pleasing look. Steel frames are powder coated black. Please specify color of recycled plastic when ordering.

WS4FCBRP	4' Flat bench	108 Lbs
WS6FCBRP	6' Flat bench	174 Lbs
WS4FCBRPIG	4' In Ground Flat bench	118 Lbs
WS6FCBRPIG	6' In Ground Flat bench	184 Lbs



Recycled Colors:



Cedar Redwood Gray Brown



Great For:

- Malls
- Pavilions
- Food Courts
- Courtyards
- City Parks
- Street Projects
- River Walks
- Zoos
- Office
- And Much More!

Windsor Select Planters

These Windsor Select Planters are 26" diameter and 30", 24", and 18" high. They are also made in round or square shapes. Slats are 2"x3" recycled plastic. Planters are free-standing on a 2" high circular base and have a plate for bolting down to the concrete or can be mounted on an in-ground post. Includes fiberglass liner with drain holes.

Round Windsor Select Planters

WSRP2630RP	Recycled plastic	128 Lbs
WSRP2624RP	Recycled plastic	110 Lbs
WSRP2618RP	Recycled plastic	92 Lbs
3032LRIG	In-ground post	15 Lbs

Square Windsor Select Planters

WSSP2630RP	Recycled plastic	185 Lbs
WSSP2624RP	Recycled plastic	160 Lbs
WSSP2618RP	Recycled plastic	135 Lbs
3032LRIG	In-ground post	15 Lbs



Windsor Select Square Table

Windsor Select square table with a 48" top and 36" long seats. Frames are powder coated black. Legs are 1 5/8" O.D. schedule 40 pipe. Ground space 6'8" x 6'8".

WS4JCRP 4' Square Table 312 Lbs



Windsor Select Picnic Table

Windsor Select picnic table top and seats are 6' long. Frames are powder coated black. Legs are 1 5/8" O.D. schedule 40 pipe. Ground space 5' x 6'.

WS6JCRP 6' Table 242 Lbs

Magnificent Modern Design



Windsor Single Post Table

Windsor Select Single Post Table frames are powder coated black, center post is 6" x 6" x 1/4" sq tube, seats support arms are 3 1/2" O.D. pipe. Ground space 6' x 5' (rectangle). 'SM' = Surface Mount. 'IG' = In-Ground.

WS6SPTCRP-SM Single Post 374 Lbs
WS6SPTCRP-IG Single Post 374 Lbs

Recycled Colors:



Cedar Redwood Gray Brown



32 Gallon Litter Receptacle

The Windsor Select 32 Gallon Litter Receptacle slats are 2"x3"x30" recycled plastic that are available in gray, cedar, brown, or redwood colors. This receptacle is free-standing on a 2" high circular base, but also has a plate for mounting on a post. Other lids purchased separately.

WS3032LRRP Litter receptacle 128 Lbs
3032LRIG In-ground post 15 Lbs

Plastic Dome
DLMP32-55
 24" ID, 10 Lbs

Blue	Red
Yellow	Brown
Grey	Black
Green	

DLG55	FLS8-32	CG32LID	CG32	CP32
23 3/4" ID, 12 Lbs	13 Lbs	3 Lbs	13 Lbs	11 Lbs





In Ground Contour Bench

Designed for indoor or outdoor use. The contoured supports are 3/8" x 4" rolled steel that is formed to shape a smooth comfortable seat and backrest. The steel leg consists of 2 1/2" square support tube welded to an arched 3/8" x 4" formed steel base. The entire frame is coated black for long life and good appearance. This frame is specifically designed so it can be fitted with 2" x 4", 3" x 4", or 4" x 4" slats of your choice, pressure treated No. 1 Southern Yellow Pine, or Recycled Plastic slats. In Ground mount.

CB2IG	Frame only, In ground mount	80 Lbs
6CB2SYP	6' Frame w/SYP 2x4s	170 Lbs
8CB2SYP	8' Frame w/SYP 2x4s	196 Lbs
4CB3RP	4' Frame w/rec plastic 3x4s	178 Lbs
6CB3RP	6' Frame w/rec plastic 3x4s	234 Lbs
8CB3RP	8' Frame w/rec plastic 3x4s	348 Lbs
4CB4RP	4' Frame w/rec plastic 4x4s	288 Lbs
6CB4RP	6' Frame w/rec plastic 4x4s	354 Lbs
8CB4RP	8' Frame w/rec plastic 4x4s	440 Lbs
ARCB24	Set of two armrests 2x4, 3x4, 4x4	18 Lbs

6CB4RP
4x4's Shown

Landmark Series Amenities

Good for the environment! Not only do they save trees, but they also reduce landfill use! Our recycled plastic is colored with a unique UV process that adds an attractive wood grain appearance. It never needs to be sealed, painted, stained and will not rot. It is maintenance-free! It is also vandal-resistant. Pens and markers can be washed off and paint will not bond to the surface - it can be removed with sandpaper or a paint scraper. Scratches to the surface can easily be ironed or sanded away. These products are designed to give years and years of trouble free service, while keeping their nice appearance. Choose color when ordering.

Landmark Bench with Back

Our Landmark series benches are a popular choice for any environment.

JPAB4	4' Bench w/ 2 Legs	120 Lbs
JPAB5	5' Bench w/ 2 Legs	135 Lbs
JPAB6	6' Bench w/ 2 Legs	155 Lbs



Recycled Plastic Colors:



Flat Bench

The Flat Bench has a black powder coated frame and three seat material options. Your choice of Southern Yellow Pine 2x4, or Recycled Plastic in 3x4 or 4x4s. The legs are 2 1/2" square steel tube with 3/8" x 4" mounting plates 4', 6' or 8' long.

FB2	Frame only, surface mount	40 Lbs
6FB2SYP	6' Frame w/SYP 2x4s	84 Lbs
8FB2SYP	8' Frame w/SYP 2x4s	98 Lbs
4FB3RP	4' Frame w/rec plastic 3x4s	105 Lbs
6FB3RP	6' Frame w/rec plastic 3x4s	135 Lbs
8FB3RP	8' Frame w/rec plastic 3x4s 3 Legs	177 Lbs
4FB4RP	4' Frame w/rec plastic 4x4s	113 Lbs
6FB4RP	6' Frame w/rec plastic 4x4s	155 Lbs
8FB4RP	8' Frame w/rec plastic 4x4s 3 Legs	218 Lbs

FB2IG	In-Ground Frame only	50 Lbs
6FB2SYP	In-Ground 6' Frame w/SYP 2x4s	94 Lbs
8FB2SYP	In-Ground 8' Frame w/SYP 2x4s	108 Lbs
4FB3RP	In-Ground 4' Frame w/rec plastic 3x4s	115 Lbs
6FB3RP	In-Ground 6' Frame w/rec plastic 3x4s	145 Lbs
8FB3RP	In-Ground 8' Frame w/rec plastic 3x4s	187 Lbs
4FB4RP	In-Ground 4' Frame w/rec plastic 4x4s	123 Lbs
6FB4RP	In-Ground 6' Frame w/rec plastic 4x4s	165 Lbs
8FB4RP	In-Ground 8' Frame w/rec plastic 4x4s	228 Lbs

Recycled Plastic:



Cedar Gray Brown



Surface Mount Contour Bench

Designed for indoor or outdoor use. The contoured supports are 3/8" x 4" rolled steel that is formed to shape a smooth comfortable seat and backrest. The steel leg consists of 2 1/2" square support tube welded to an arched 3/8" x 4" formed steel base. The entire frame is coated black for long life and good appearance. This frame is specifically designed so it can be fitted with 2" x 4", 3" x 4", or 4" x 4" slats of your choice, pressure treated No. 1 Southern Yellow Pine, or Recycled Plastic. Comes standard with Surface Mount Legs.

CB2	Frame only, surface mount	70 Lbs
6CB2SYP	6' Frame w/SYP 2x4s	160 Lbs
8CB2SYP	8' Frame w/SYP 2x4s	186 Lbs
4CB3RP	4' Frame w/rec plastic 3x4s	168 Lbs
6CB3RP	6' Frame w/rec plastic 3x4s	224 Lbs
8CB3RP	8' Frame w/rec plastic 3x4s 3 Legs	330 Lbs
4CB4RP	4' Frame w/rec plastic 4x4s	278 Lbs
6CB4RP	6' Frame w/rec plastic 4x4s	344 Lbs
8CB4RP	8' Frame w/rec plastic 4x4s 3 Legs	430 Lbs
ARCB24	Set of two armrests 2x4, 3x4, 4x4	18 Lbs



Landmark Backless Bench

Our Landmark series backless benches are a popular choice for any environment.

Made with 2 x 4 recycled plastic slats
Heavy-duty cast aluminum frame is powder-coated
Stainless Steel Hardware
Colored with UV process that adds wood grain appearance
Maintenance-free - no need to seal, paint or stain and will not rot
Bench frame is portable but includes holes in the legs for surface mounting
Plastic made with minimum of 30% recycled plastic that is 100% post-consumer HDPE

JPAPL4	4' Backless Bench	70 Lbs
JPABL5	5' Backless Bench	80 Lbs
JPABL6	6' Backless Bench	90 Lbs



Square Receptacle

JPSPLR32	32 Gal. Receptable	75 Lbs
JP32LINER	32 Gal Liner	6 Lbs



Round Receptacle

JPRLR32	32 Gal. Receptable	60 Lbs
JP32LINER	32 Gal. Liner	6 Lbs
JPRLR55	55 Gal. Receptable	75 Lbs
JP55LINER	55 Gal. Liner	11 Lbs



32 Gallon Hinged Receptacle

JPSLR32	32 Gal. Receptable	140 Lbs
JP32LINER	32 Gal Liner	6 Lbs



Standard Perforated Bench

A great option for parks, playgrounds and for use as a players bench. Available in different lengths and colors to suit anyone needs.

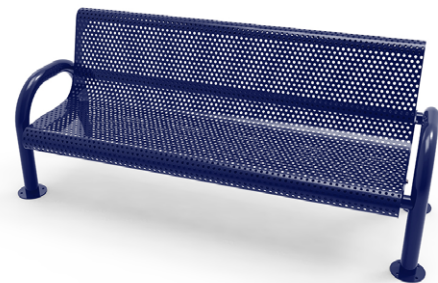
- 1/2" Punched Steel
 - 3/4" x 2" Angle Iron Outer Frame
 - 1 1/2" x 1/4" Flat Steel Inside Bracing
 - 2 3/8" Round Tubing Frame Material
 - 2" x 2" Angle Iron Frame Bracing
 - 1" Round Tubing Diagonal Braces for
- | | | |
|-------------------|---------------------|---------|
| MCPB6TPP | 6' Portable Bench | 120 Lbs |
| MCPB8TPP | 8' Portable Bench | 149 Lbs |
| MCPB10TPP | 10' Portable Bench | 190 Lbs |
| MCPB15TPP | 15' Portable Bench | 225 Lbs |
| MCPB6TPSM | 6' Surface Bench | 112 Lbs |
| MCPB8TPSM | 8' Surface Bench | 137 Lbs |
| MCPB10TPSM | 10' Surface Bench | 187 Lbs |
| MCPB15TPSM | 15' Surface Bench | 215 Lbs |
| MCPB6TPIG | 6' In-ground Bench | 117 Lbs |
| MCPB8TPIG | 8' In-ground Bench | 142 Lbs |
| MCPB10TPIG | 10' In-ground Bench | 183 Lbs |
| MCPB15TPIG | 15' In-ground Bench | 218 Lbs |



Backless Perforated Bench

A great option for parks, playgrounds and for use as a players bench. Available in different lengths and colors to suit anyone needs.

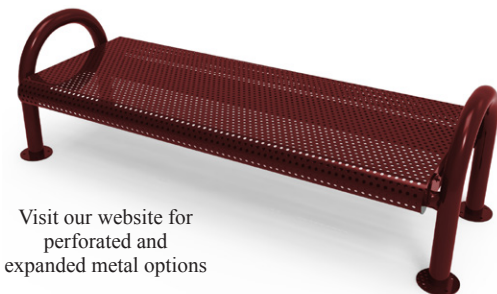
- 1/2" Punched Steel
 - 3/4" x 2" Angle Iron Outer Frame
 - 1 1/2" x 1/4" Flat Steel Inside Bracing
 - 2 3/8" Round Tubing Frame Material
 - 2" x 2" Angle Iron Frame Bracing
 - 1" Round Tubing Diagonal Braces for
- | | | |
|--------------------|------------------------------|---------|
| MCPBB6TPP | 6' Backless Portable Bench | 63 Lbs |
| MCPBB8TPP | 8' Backless Portable Bench | 75 Lbs |
| MCPBB10TPP | 10' Backless Portable Bench | 99 Lbs |
| MCPBB15TPP | 15' Backless Portable Bench | 111 Lbs |
| MCPBB6TPSM | 6' Backless Surface Bench | 57 Lbs |
| MCPBB8TPSM | 8' Backless Surface Bench | 97 Lbs |
| MCPBB10TPSM | 10' Backless Surface Bench | 93 Lbs |
| MCPBB15TPSM | 15' Backless Surface Bench | 104 Lbs |
| MCPBB6TPIG | 6' Backless In-ground Bench | 59 Lbs |
| MCPBB8TPIG | 8' Backless In-ground Bench | 71 Lbs |
| MCPBB10TPIG | 10' Backless In-ground Bench | 95 Lbs |
| MCPBB15TPIG | 15' Backless In-ground Bench | 106 Lbs |



Perforated Modern Bench

One bench with several options. 1/2" hole Punched Steel. The bench frame is made from 2 7/8" outer diameter steel. Coated in a thermoplastic finish. Legs and seat are the same color. Choose between surface mount or in ground mount

- | | | |
|------------------|-------------------------|---------|
| MCMD4PSIG | In-ground 48" Bench | 165 Lbs |
| MCMD6PSIG | In-ground 72" Bench | 204 Lbs |
| MCMD4PSSM | Surface Mount 48" Bench | 145 Lbs |
| MCMD6PSSM | Surface Mount 72" Bench | 184 Lbs |

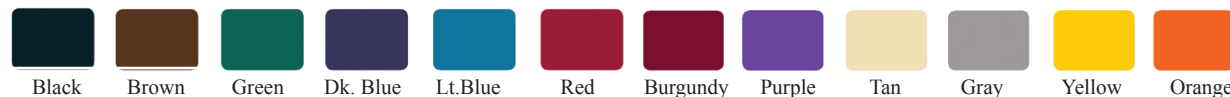


Perforated Backless Modern Bench

One bench with several options. 1/2" hole Punched Steel. The bench frame is made from 2 7/8" outer diameter steel. Coated in a thermoplastic finish. Legs and seat are the same color. Choose between surface mount or in ground mount

- | | | |
|--------------------|-------------------------|---------|
| MCMDBB4PSIG | In-ground 48" Bench | 135 Lbs |
| MCMDBB6PSIG | In-ground 72" Bench | 167 Lbs |
| MCMDBB4PSSM | Surface Mount 48" Bench | 119 Lbs |
| MCMDBB6PSSM | Surface Mount 72" Bench | 152 Lbs |

Thermoplastic Colors:



Perforated Picnic Table

Weather resistant thermoplastic coating on 11 ga tops and seats. With a 2 3/8" O.D. steel tube frame comes with a black powder coat finish. The combination makes this an attractive and durable table for any outdoor setting.

- | | | |
|-------------------|-----------------------|---------|
| MC6PSTP | 6' Portable table | 225 Lbs |
| MC8PSTP | 8' Portable table | 271 Lbs |
| MC8PSTPADA | 8' Portable table ADA | 238 Lbs |
| MC10PSTP | 10' Portable table | 388 Lbs |



46" Round Perforated Table

Thermoplastic tops and seats that are made of 11 ga perforated steel that comfortably seat eight around a 46" top. The 1 5/8" O.D. tube legs are powder coated black. The 3 seat model is used for ADA wheelchair accessibility.

- | | | |
|----------------------|----------------------------|---------|
| MC46PSRTP | 46" Portable table | 257 Lbs |
| MC46PSRTPADA2 | 46" Portable table, 2 seat | 210 Lbs |
| MC46PSRTPADA3 | 46" Portable table, 3 seat | 233 Lbs |



Square Table

Portable thermoplastic perforated steel square table.

- | | | |
|---------------------|------------------------|---------|
| MC46PSTP | 46" Sq. Square Table | 259 Lbs |
| MC46PSTPADA2 | 46" Sq. Square, 2 seat | 245 Lbs |
| MC46PSTPADA3 | 46" Sq. Square, 3 seat | 251 Lbs |



32 Gal. Perf. Receptacle

This 11 ga metal has thermoplastic coating in variety of colors. Lids and liners sold separately.

32 Gal. Perf.

32 Gal. Dog Trash

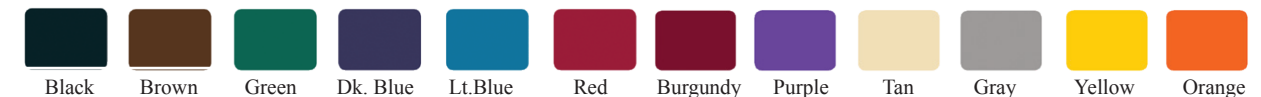
- | | | |
|-------------------|--------|-----------------|
| 32 Gal Perf round | 81 Lbs | MCPS32LR |
| Surface Mount | 6 Lbs | MCPSLRSM |
| In Ground Mount | 6 Lbs | MCPSLRIG |

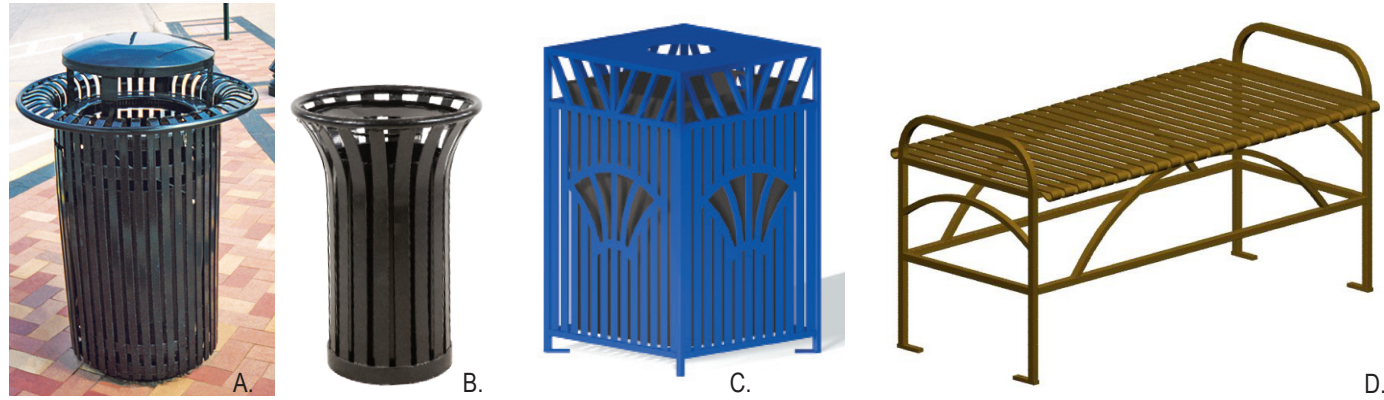
- | |
|-----------------|
| MCPSDP32 |
| MCPSDPSM |
| MCPSDPDG |

Special Colors Available at Additional Charge



Thermoplastic Colors:





Beautify your street scape with
Maintenance-FREE
Elegant Strap Steel



A. 32 Gal recept w/Snuffer top	SSHRLRCS	340 Lbs
B. Cigarette Snuffer	SSCS	80 Lbs
C. 32 Gal "V" Style Litter Receptacle	SSVSLR32	250 Lbs
C. "V" Style Cigarette Snuffer w/Bowl	SSVCS	80 Lbs
D. 48" Backless Bench	SSABB48	150 Lbs
D. 72" Backless Bench	SSABB72	180 Lbs
E. 36"W x 24"H Planter	SSAP362432	300 Lbs
F. 48" Contour Bench	SSCB48	240 Lbs
F. 72" Contour Bench	SSCB72	300 Lbs



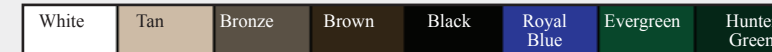
Don't Forget the Round Litter Receptacles Page 33



A. 48" Bench

B.

Powder Coat Colors:



C.



48" Backless Bench

Ashtray top



E.

Rain Cover



F.

Recycling Bins come complete w/liners, specify compartment wording

A. 48" Bench with back	IVB48PC	170 Lbs	D. 48" Backless Bench	IVBB48PC	115 Lbs
A. 60" Bench with back	IVB60PC	190 Lbs	D. 60" Backless Bench	IVBB60PC	140 Lbs
A. 72" Bench with back	IVB72PC	210 Lbs	D. 72" Backless Bench	IVBB72PC	165 Lbs
A. 96" Bench with back	IVB96PC	260 Lbs	D. 96" Backless Bench	IVBB96PC	215 Lbs
B. 45 Gal recept Flat Lid	IVILRPC	340 Lbs	E. Ashtray top/rain cover	IVATC	10 Lbs
C. 30" dia. x 25"h w/liner	IVPLANTER	290 Lbs	F. Rain Cover	IVATC	12 Lbs
			G. 3 Bin Oval Recycling	IVRC3R	390 Lbs