

Pedestal Grills



Dual Cooking Grate!



Utility Shelf

SBD60035

- Dual 302 Sq. Inch Cook Surface
- 1/2" Rods on 1" Centers
- 3/16" Steel Body
- 3 1/2" Galvanized Pedestal
- Rotates 360 Degrees
- Optional Utility Shelf
- Dual 4 Position Cook Surface
- Vandal Resistant
- High Heat Black Enamel Paint

SBD60035	Standard (3 1/2") Ped.	140 Lbs
UT	Optional utility shelf	10 Lbs



Utility Shelf

SB400

- 392 Sq. Inch Cook Surface 14"x28"
- 1/2" Rods on 1" Centers
- 3/16" Steel Body
- 2 3/8" or 3 1/2" Galvanized Pedestal
- Rotates 360 Degrees
- Optional Utility Shelf
- 4 Position Cook Surface
- Vandal Resistant
- High Heat Black Enamel Paint

SB40035	Grill with 3 1/2" Ped.	110 Lbs
UT	Optional utility shelf	10 Lbs



SI1635

- 320 Sq. Inch Cook Surface
- Grate Infinitely adjustable
- 16" x 20" Firebox with 8" Sides
- 3 1/2" Galvanized Pedestal
- Rotates 360 Degrees
- 3/16" Steel Body
- Grate tips back for fire building and cleaning
- Vandal Resistant
- High Heat Black Enamel Paint

SI1635	Grill with 3 1/2" Ped.	83 Lbs
UTS1	Utility Shelf	5 Lbs



Utility Shelf

Utility Shelf - 8" x 20" x 3/16" bolts onto rear. Available for grills above. Model "UT" is painted black and model "UTG" is galvanized. Not available for ADA Pedestal **SB16ADA**. Model "UTS1" is for model **SI1635** only painted black.

Surface Mount

To add surface mount to any grill on this page add "SM" to model number and a increase in price.



WARNING: Cancer and Reproductive Harm www.P65Warnings.com

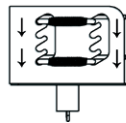


SB16 Grill

- 300 Sq. Inch Cook Surface 15"x20"
- 1/2" Rods on 1" Centers
- 3/16" Steel Body
- 2 3/8" or 3 1/2" Galvanized Pedestal
- Rotates 360 Degrees
- Optional Utility Shelf
- 4 Position Cook Surface
- Vandal Resistant
- High Heat Black Enamel Paint

Only Models:
SB16
SB16ADA

SB16	Standard (2 3/8") Ped.	79 Lbs
SB1635	3 1/2" Ped.	88 Lbs
SB1635GR	3 1/2" Ped. & gal. body	88 Lbs
UT	Optional utility shelf	10 Lbs
UTG	Optional galv. utility shelf	10 Lbs
SM	Add Surface Mount Option - See Below	



2 Day **SB16**

SB16ADA Wheel Chair Accessible Grill



ADA

Pedestal Grill

- 300 Sq Inch Cook Surface 15"x20"
- 1/2" Rods on 1" Centers
- 3/16" Steel Body
- 2 3/8", or 3 1/2" O.D. Galvanized Pedestal
- Rotates 360 Degrees
- Easy Swivel Cook Surface
- High Heat Black Enamel Paint

SB16ADA	2 3/8" Pedestal Grill	80 Lbs
SB16ADA3.5	3 1/2" Pedestal Grill	89 Lbs
UTADA	Optional utility shelf	10 Lbs
SM	Add Surface Mount Option - See Below	



2 Day **SB16ADA**



SF16 Grill

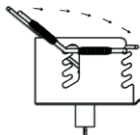
- All the features of the SB16 with the added feature of a flip back cook surface.

Only Models:
SF16

SF16	Standard (2 3/8") Ped.	79 Lbs
SF1635	3 1/2" Ped.	88 Lbs
SF1635GR	3 1/2" Ped. & gal. body	88 Lbs
UT	Optional utility shelf	10 Lbs
UTG	Optional galv. utility shelf	10 Lbs
SM	Add Surface Mount Option - See Below	



2 Day **SF16**



Hot Dip Galvanized Body

SB16 and SF16 only are available with hot dip galvanized body. Galvanized is only available with 3.5" pedestal. Cooking grate coated with black high heat paint. Please add "G" to model number.

Grill Cover

Black Vinyl Cover with drawstring closure fits standard pedestal grills.

PGCOVER 2 Lbs



Entire Page

WARNING: Cancer and Reproductive Harm www.P65Warnings.com

Group Grills



SPD450 - Large Group Grill

- 1368 Sq Inch Cook Surface 38"x36"
- 1/2" Rods on 1" Centers
- 3/16" Steel Body
- 6" Square Pedestal (Anchors Included)
- 12"x36" Bolt On Utility Shelf
- Adjustable 4 Position Fire Grate
- Flip up Grates for Easy Fire Building
- High Heat Black Enamel Paint
- Surface mount is standard

SPD450	Standard w/1 shelf SM	460 Lbs
SPD450IG	In ground mount	460 Lbs
SPDUT	Additional shelf	29 Lbs



7 Business Days



Room to Cook Enough Food For a Family Reunion!



WARNING: Cancer and Reproductive Harm www.P65Warnings.com



SB3628U - Medium Group Grill

- 1008 Sq Inch Cook Surface 28"x36"
- 1/2" Rods on 1" Centers
- 3/16" Steel Body
- 6" Square Pedestal (Anchors Included)
- 10"x28" Bolt On Utility Shelf
- 2 Separately Adjustable Cook Surfaces
- High Heat Black Enamel Paint
- Surface mount is standard

SB3628U	Standard (6" sq ped) SM	246 Lbs
SB3628UIG	In ground mount	266 Lbs



7 Business Days



XB16 - Small Group Grill

- 860 Sq Inch Cook Surface 18"x 48"
- 1/2" Rod on 1" Centers
- 3/16" Steel Body
- Two 2 3/8" O.D. Galvanized In Ground Posts
- 4 Position Adjustable Cook Surface
- High Heat Black Enamel Paint
- In ground mount is standard

XB16	Standard (2 peds) IG	197 Lbs
XB16SM	Surface Mount	177 Lbs



7 Business Days

Covered Grills & Utility Tables

Covered Grills

- 320 or 500 Sq. In Cook Surface
- 1/2" dia. Non removable steel cooking grates
- 14 ga. Sheet Steel
- 10 ga. steel plate fire box
- 11 ga. steel end panels
- 360 degree rotation heat and smoke control
- 3 1/2" O.D. pedestal
- High Heat Black Enamel Paint
- Utility Shelf included

ECG1929	320 Sq. in 19.5"x29.25"x16.5"	155 Lbs
ECG1929SM	320 Sq. in 19.5"x29.25"x16.5" Surface Mount	151 Lbs
ECG1941	500 Sq. in 19.5"x41.5"x16.5"	198 Lbs
ECG1941SM	500 Sq. in 19.5"x41.5"x16.5" Surface Mount	192 Lbs
ECPCB	Optional portable casters	29 Lbs
ECQB29	Optional warming basket	16 Lbs
ECQB41	Optional warming basket	12 Lbs



2 Day on **ECG1929** **ECG1941**



Only for **ECG1929** **ECG1941**
Shown with
Optional
Warming
Basket



Ash Shovel

ASHSHOVEL Ash Shovel 1 Lbs



Utility Table - KPULT1830SM

- 18"L x 30"W x 32"H
- Supported by 4" x 6" rectangular steel tube
- 3/16" steel plate top
- Surface mount only
- High Heat Black Enamel Paint

KPULT1830SM Utility Table 123 Lbs



Utility Table - KPULT3048SM

- 30"L X 48"W x 32"H
- Supported on two 6" steel channel iron posts
- Top reinforced with 3/16" x 3" x 3" angle irons
- Surface mount only
- High Heat Black Enamel Paint

KPULT3048SM Utility Table 200 Lbs



WARNING: Cancer and Reproductive Harm www.P65Warnings.com

Fire Rings

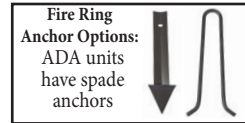


FR30 Fire Ring

- 300 Sq. Inch Cook Surface 15"x20"
- 1/2" Rods on 1" Centers
- 30" Diameter
- 3/16" Thick Steel
- "TB" = tilt back hinges
- "SAS" = spade anchors
- Cool Spring Handles
- 4 Heights Available
- High Heat Black Enamel Paint

FR730TB	7" High tilt back staples	69 Lbs
FR730SAS	7" High spade anchors	74 Lbs
FR930TB	9" High tilt back staples	88 Lbs
FR930SAS	9" High spade anchors	95 Lbs
FR1130TB	11" High tilt back staples	105 Lbs
FR1130SAS	11" High spade anchors	116 Lbs
FR1830WCSAS	18" High Sides ADA Compliant fire ring	130 Lbs

Flip - Up Grate,
Flips out of the way!



ADA
Unit

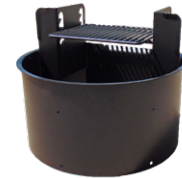
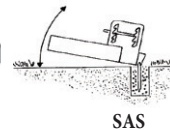
30" Diameter



AFG80 Fire Ring

- 300 Sq. Inch Cook Surface 15"x20"
- 1/2" Rods on 1" Centers
- 34" Diameter
- 6" High Sides (18" High Sides for ADA)
- 4 Adjustable Cooking Heights
- Reinforcing Angle Across Pit
- Cool Spring Handles
- Vandal Resistant
- High Heat Black Enamel Paint
- AFG80WCSAS is ADA compliant

AFG80TB	AFG80 Tilt back staples	86 Lbs
AFG80SAS	AFG80 Spade anchors	91 Lbs
AFG80WCSASR	ADA Compliant fire ring	167 Lbs



ADA
Unit

34" Diameter



Swivel Grate Fire Ring

- 32" Diameter
- 300 Square inch cooking grate
- Cooking grate rotates 180 degrees
- 9" height
- Tilt back staples
- Made from 3/16" steel
- High Heat Black Enamel Paint

FR930SWTB	Swivel Grate	84 Lbs
------------------	--------------	--------



WARNING: Cancer and Reproductive Harm www.P65Warnings.com