



Kay Park Concrete Foosball

- Regulation Size Table 54 1/2" x 36" x 36"H
- Standard Finish is Natural Gray with Light Sandblast Frame
- Heavy Duty Reinforced Concrete
- Table Side Thickness 3"
- UHPC Ultra High Performance Concrete field, green and charcoal
- 316 Stainless Steel Rods
- Stenciled Playing Lines
- Center Ball Drop Holes
- Easy Access Ball Drop
- Optional Stainless Steel Scorekeepers
- Stainless Steel Table Levelers
- Optional Anchor Inserts, Stainless Steel Sold Separate
- Tamper Resistant Stainless Steel Assembly Screws
- Heavy Duty 4" High Steel I-Beam Supports
- Standard Foosball Players, Red and Blue

KPFBT 54 1/2" x 36" x 36"H Gray 1,225 Lbs

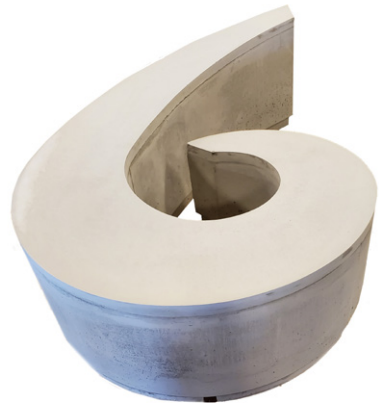


Concrete Handicap Bollard

A great way to mark handicap parking without having to paint and also offer some protection for your area as well. (you can modify this)

- Choose color and aggregate texture
- Choose mounting option

CBH Handicap Bollard 16" W x 48"H x 12"D 150 Lbs



Concrete Wrap Bench

Add stylized and sturdy seating to your area with this unique concrete wrap bench.

- Choose color and texture.
- One piece solid concrete

CPBWRAP Concrete Bench 76" L x 22"H x 44"W 2,500 Lbs

Concrete Colors and finish:

	Smooth	Light Sand Blast	Perma Stone	Dura Brite
Dove Gray				
Terra Cotta				
Light Brown				
Sand Tan				

Select Color:
Dove Gray, Terra Cotta,
Light Brown, or Sand Tan

Select Texture:
Smooth, Light Sand Blast,
Perma Stone, or Durabrite

Square Concrete Planter

- Includes 4 - 1" drain holes
- Tapered look
- 2 3/4" thick concrete walls

CPAS2828 Square Planter 28" L x 24"H x 28"W 600 Lbs



Shown Custom Black Stain

Concrete Ball Bollards

Concrete ball bollards are available in different sport balls for schools and sport facilities.

CBBB36	Baseball	36" W x 36" H	2,000 Lbs
CBSB36	Softball	36" W x 36" H	2,000 Lbs
CBFB21	Football	21" W x 42" H	700 Lbs
CBKT18	Basketball	36" W x 36" H	2,000 Lbs
CBSCR36	Soccerball	36" W x 36" H	2,000 Lbs
CBGB36	Golfball	36" W x 36" H	1,700 Lbs



Football Bollard Golf Bollard Soccerball Bollard Basketball Bollard



Baseball Bollard



Softball Bollard

Concrete Sphere Bollard

Sphere bollard comes in two sizes with a square base, very aesthetic.

CBSPH39	39"W x 39" L x 42"H	3,950 Lbs
CBSPH52	52"W x 52" L x 51"H	6,560 Lbs

Concrete Colors and finish:

	Smooth	Light Sand Blast	Perma Stone	Dura Brite
Dove Gray				
Terra Cotta				
Light Brown				
Sand Tan				

Select Color:
Dove Gray, Terra Cotta,
Light Brown, or Sand Tan

Select Texture:
Smooth, Light Sand Blast,
Perma Stone, or Durabrite

Mounting Options:

Option A:
Bollard is precast with hollow core. Dimensions of this core are predetermined by the contractor, and need to be specified when placing the order. Existing pad, slab or sidewalk is cast with exposed vertical tubing or pipe to fit inside the core of the bollard. Before bollard is set on exposed tube. On the existing pad, epoxy, caulk, or other bonding agent is applied to core and/or vertical pipe for securing purposes. The bollard is then set in place.

Option B:
Bollard is precast with pipe or tube protruding from bottom of bollard. Dimensions of protruding pipe or tube are pre-determined by the contractor, and need to be specified when placing order. Existing pad, slab, or sidewalk is cast with sleeve correlating to protruding pipe on the bottom of the bollard. Before bollard is set, epoxy, caulk, or other bonding agent is applied to either the tube or the pipe, and/or applied to the sleeves in the existing pad. The bollard is then set in place.

Option C:
Bollard is precast with apre-determined number and pattern of inserts into the bottom of the bollard. Size and pattern of inserts are determined by the contractor and need to be specified when placing the order. The existing pad, slab or sidewalk is cast with sleeves correlating to the inserts in the bottom of the bollard. Threaded rod (included with purchase of bollard) are then screwed into the inserts in the bottom of the bollard. Epoxy, caulk, or bonding agent is applied to the rod and/or into the sleeves in the existing pad. and the bollard is set into place..

