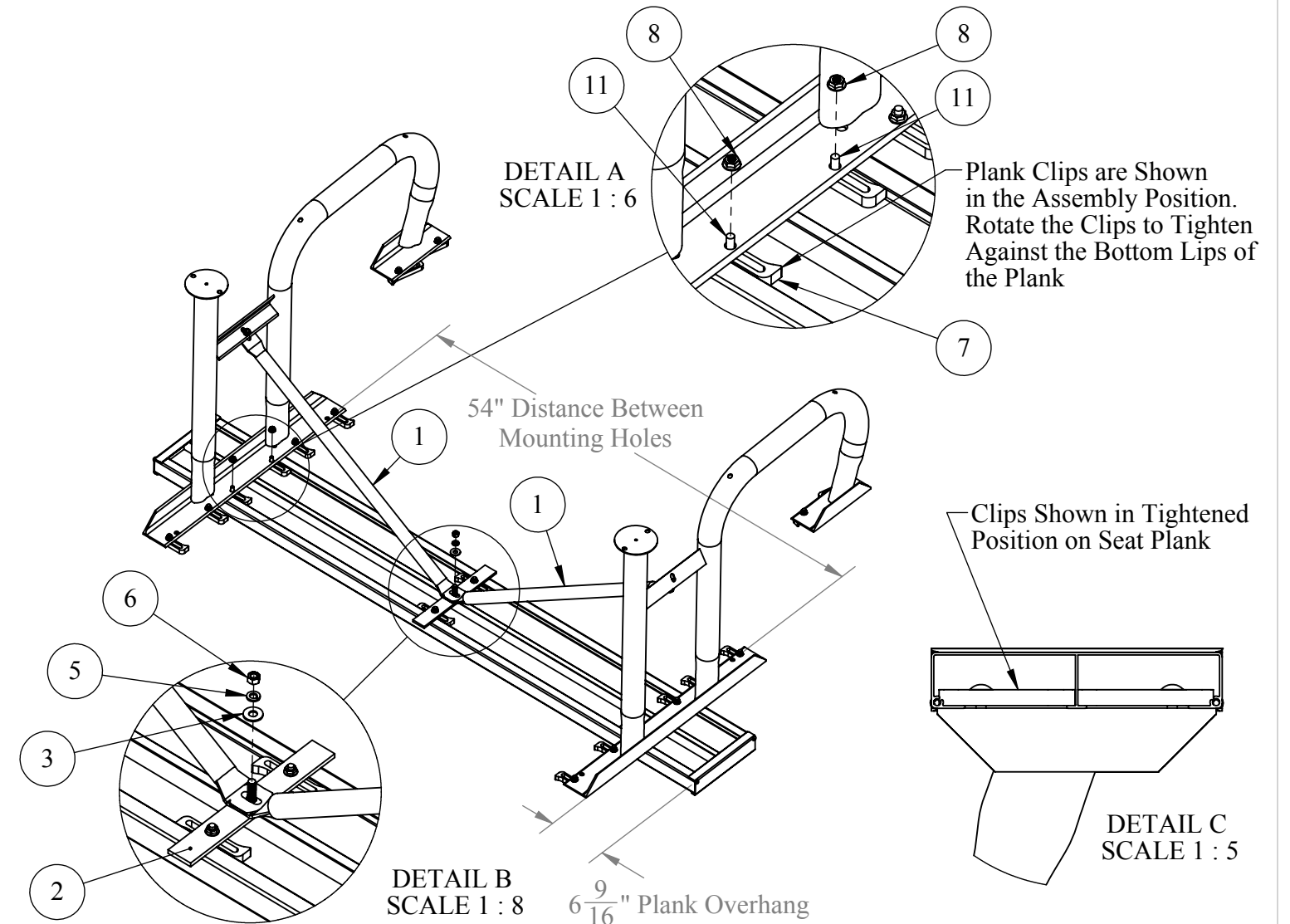
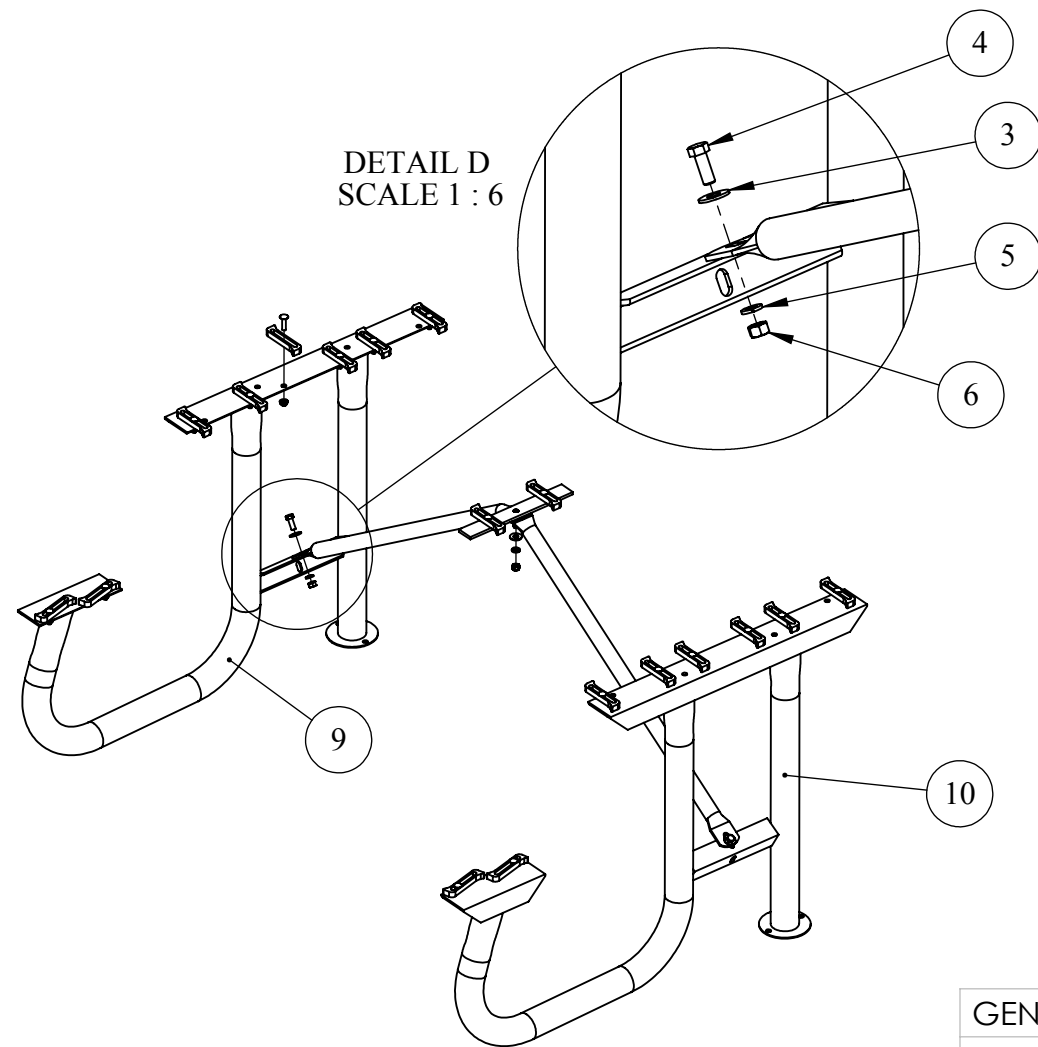


ITEM NO.	PART NUMBER	DESCRIPTION	No Planks/QTY.
1	6IPT-5	6IPT-5 GALV SUPPORT BRACE	2
2	IPTA-6	CENTER SUPPORT CLEAT	1
3	Preferred Wide FW 0.375	FLAT WASHER FW 0.375	3
4	HBOLT 0.3750-16x1x1-N	HEX HEAD BOLT 0.3750-16x 1.00	2
5	LOCKW-3/8	LOCK WASHER 3/8"	3
6	HNUT 0.3750-16-D-N	HEX NUT 0.3750-16	3
7	IA-12	Aluminum 2" x 10" Plank Clip	18
8	NUT-5/16	5/16"-18 FLANGED HEX NUT	18
9	J21SL-SA1	J2 LEG ASSY LEFT SURFACE MOUNT	1
10	J21SR-SA1	J2 RIGHT LEG ASSY SURFACE MOUNT	1
11	RHSSNBOLT 0.3125-18x1.25x1.25-N	CARRIAGE BOLT 0.3125-18x1.25	18

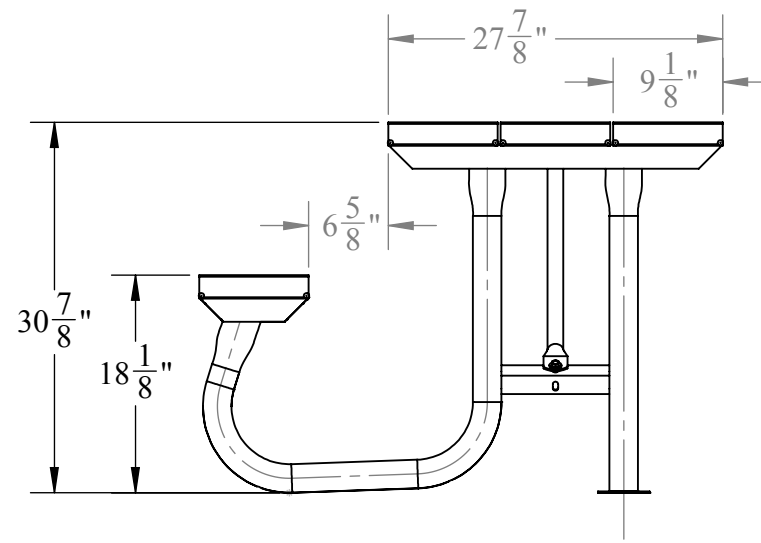
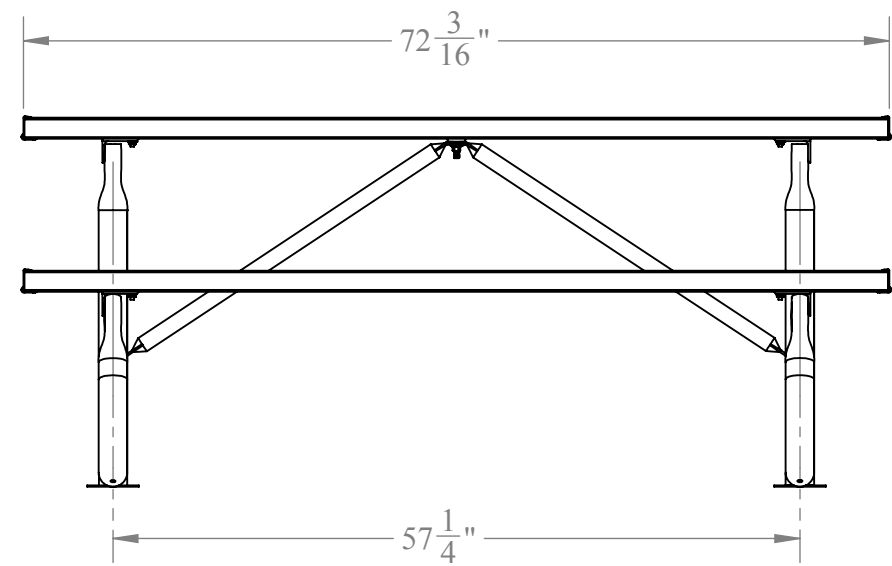
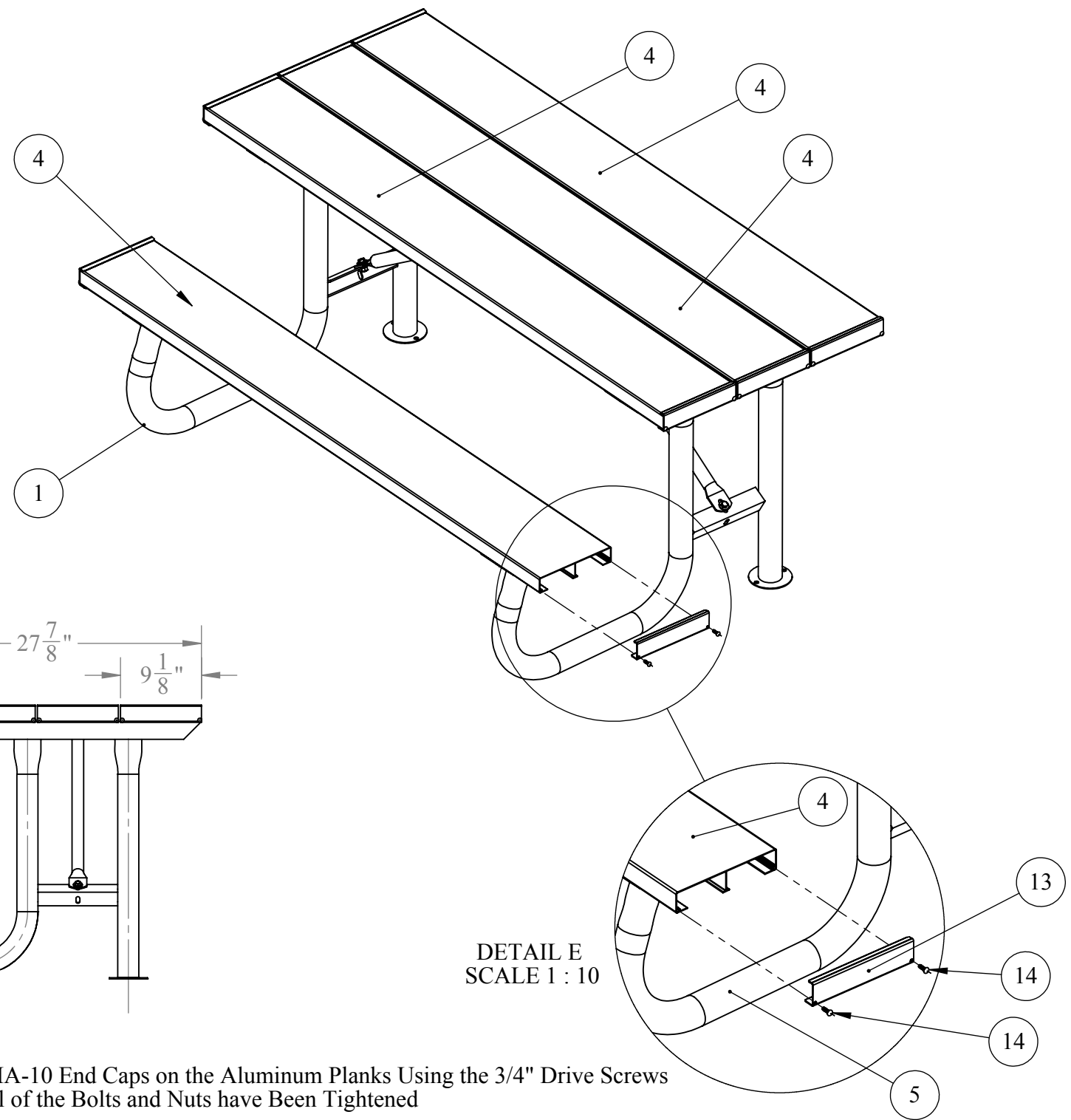
1. Start by Laying One of the 8' Planks Upside Down on a Flat Surface. Place a Plank Clip Under the Angle Iron Mounting Cleat of the Leg Assembly As Shown Below. Finger Tighten (2) 5/16"- 18 Flanged Nuts on Each End on the Plank.
2. Attach the Center Support Cleat to the Plank in the Same Manner.
3. Assemble the Galvanized Support Tubes to the Center Cleat and to the Leg as Shown. There should be and Equal Distance of Plank Overhang on Each End of the Table.
4. Square up the Legs on the Plank and Tightened All of the Hardware for this Center Plank. Now Assembly the Remaining Table Top Planks and the Seat Plank.



CONFIDENTIAL DRAWING AND INFORMATION IS NOT TO BE COPIED OR DISCLOSED TO OTHERS WITHOUT THE CONSENT OF KAY PARK. SPECIFICATIONS ARE SUBJECT TO CHANGE WITHOUT NOTICE.

GENERAL NOTES:		UNLESS OTHERWISE SPECIFIED:		NAME	DATE		TITLE:	
DIMENSIONS ARE IN INCHES		DRAWN		DAT	10/2/2014		DESC. SCORER'S TABLE 6' GALV FRAME ALUMINUM TOP and SEAT PLANKS	
TOLERANCES:		CHECKED				S:\CADDRWGS\Solidworks\Tables\J2\		
FRACTIONAL ± 1/32		ENG APPR.				SIZE PART NO. REV		
BEND ± 1/2°		MFG APPR.				B 6J2GA1S		
THREE PLACE DECIMAL ± .005		Last Saved		10/9/2014 8:25:23 AM		Start Assembly of Table		
Do Not Scale Drawing		COMMENTS:						
MATERIAL								
SHEET 1 OF 2								
Path to Part or Assy - 6J2GA1S		S:\CADDRWGS\Solidworks\Tables\J2\						

ITEM NO.	PART NUMBER	DESCRIPTION	Default/QT Y.
1	J21SL-SA1	J2 LEG ASSY LEFT SURFACE MOUNT	1
2	6IPT-5	6IPT-5 GALV SUPPORT BRACE	2
3	IPTA-6	CENTER SUPPORT CLEAT	1
4	6IA-7	72" S 2"x 10" PLANK NO END CAPS	4
5	J21SR-SA1	J2 RIGHT LEG ASSY SURFACE MOUNT	1
6	Preferred Wide FW 0.375	FLAT WASHER FW 0.375	3
7	HBOLT 0.3750-16x1x1-N	HEX HEAD BOLT 0.3750-16x 1.00	2
8	LOCKW-3/8	LOCK WASHER 3/8"	3
9	HNUT 0.3750-16-D-N	HEX NUT 0.3750-16	3
10	IA-12	Aluminum 2" x 10" Plank Clip	18
11	RHSSNBOLT 0.3125-18x1.25x1.25-N	CARRIAGE BOLT 0.3125-18x1.25	18
12	NUT-5/16	5/16"-18 FLANGED HEX NUT	18
13	IA-10	ALUM 2x10 END CAPS 9 1/8"	8
14	DRIVES-3/4	DRIVER SCREW 3/4"	16



DETAIL E
SCALE 1 : 10

Tap the IA-10 End Caps on the Aluminum Planks Using the 3/4" Drive Screws
After All of the Bolts and Nuts have Been Tightened

CONFIDENTIAL DRAWING AND INFORMATION IS NOT TO BE
COPIED OR DISCLOSED TO OTHERS WITHOUT THE CONSENT
OF KAY PARK. SPECIFICATIONS ARE SUBJECT TO CHANGE
WITHOUT NOTICE.

GENERAL NOTES:		UNLESS OTHERWISE SPECIFIED:		NAME	DATE		TITLE:	
		DIMENSIONS ARE IN INCHES TOLERANCES: FRACTIONAL ± 1/32 BEND ± 1/2° THREE PLACE DECIMAL ± .005 Do Not Scale Drawing		DRAWN	DAT		10/2/2014	
		MATERIAL		CHECKED			DESC.	
				ENG APPR.			S:\CADDRWGS\Solidworks\Tables\J2\	
				MFG APPR.				
				Last Saved	10/9/2014 8:25:23 AM			
				COMMENTS:				
		SHEET 2 OF 2		SIZE	PART NO.		REV	
				B	6J2GA1S			
Path to Part or Assy - 6J2GA1S		S:\CADDRWGS\Solidworks\Tables\J2\		Default				