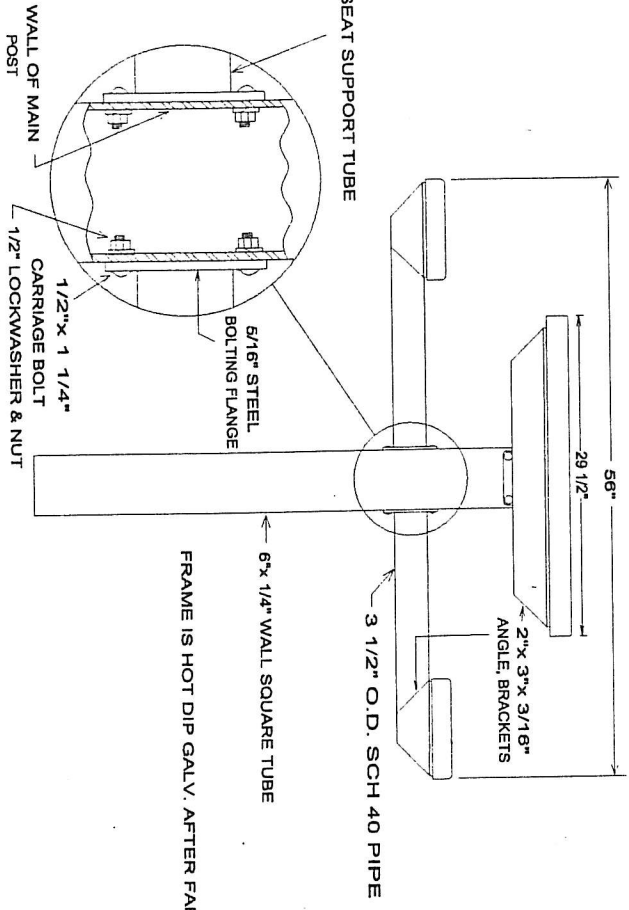
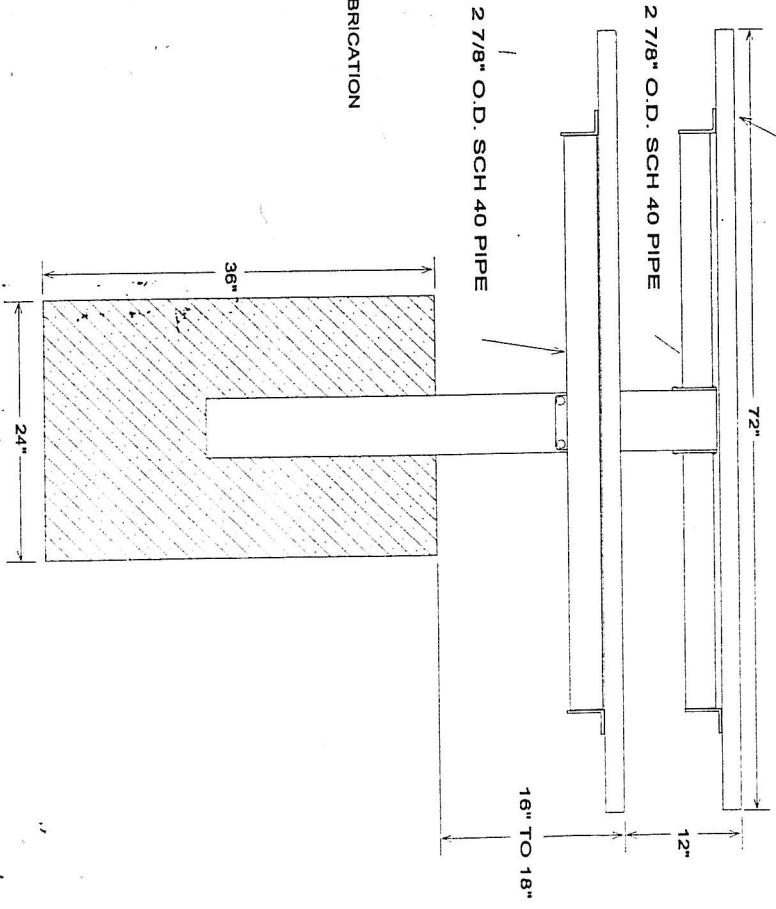


OUTSIDE ONLY SMOOTH CARR. BOLT HEADS ARE EXPOSED
 THE LOCKWASHERS & NUTS ARE ON THE INSIDE OF THE MAIN POST
 SO WHEN THE TABLE IS FULLY ASSEMBLED THEY ARE NOT ACCESSIBLE



FRAME IS HOT DIP GALV. AFTER FABRICATION

TOP AND SEATS ARE
 #9 X 3/4" EXPANDED METAL W/ 2 3/4" X 1/8" FORMED BORDER
 COATED W/ VINYLAST PLASTISOL



THE SIZE OF THE CONCRETE BASE IS ONLY A SUGGESTION
 YOUR LOCAL SOIL CONDITIONS SHOULD DETERMINE WHAT
 IS NECESSARY TO ENSURE A STABLE MOUNTING

FILE NO. 6SPGTGVP

REVISED		KAY PARK	
LCB-10/97			
MODEL		381 lbs	
6SPGTGVP			
DRAWN BY	LCB	DATE	7/7/94
		SCALE	NONE