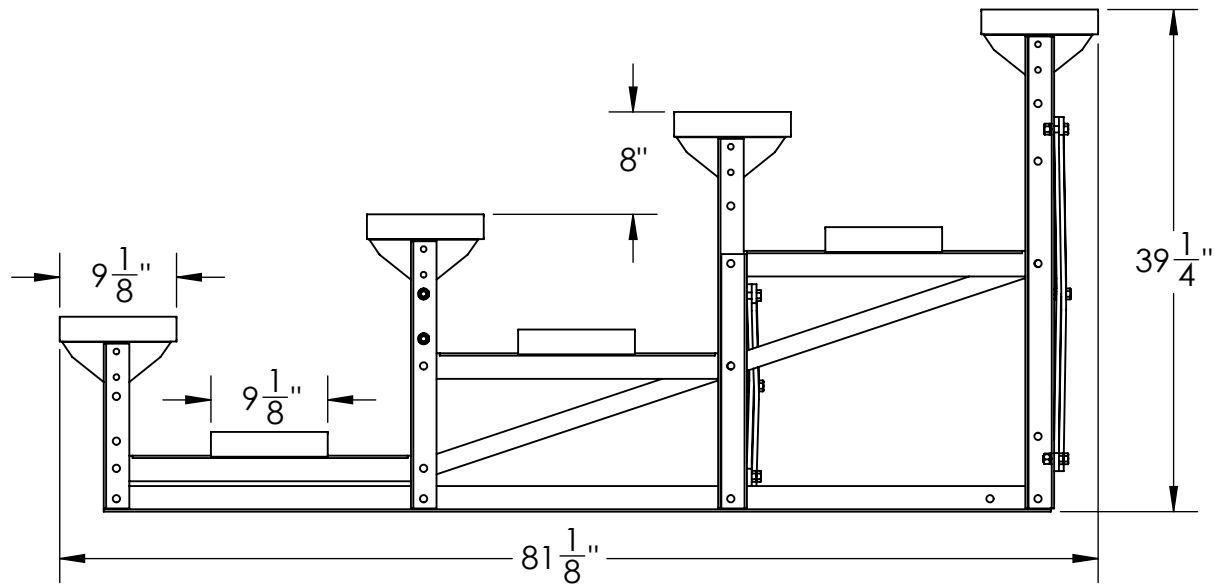
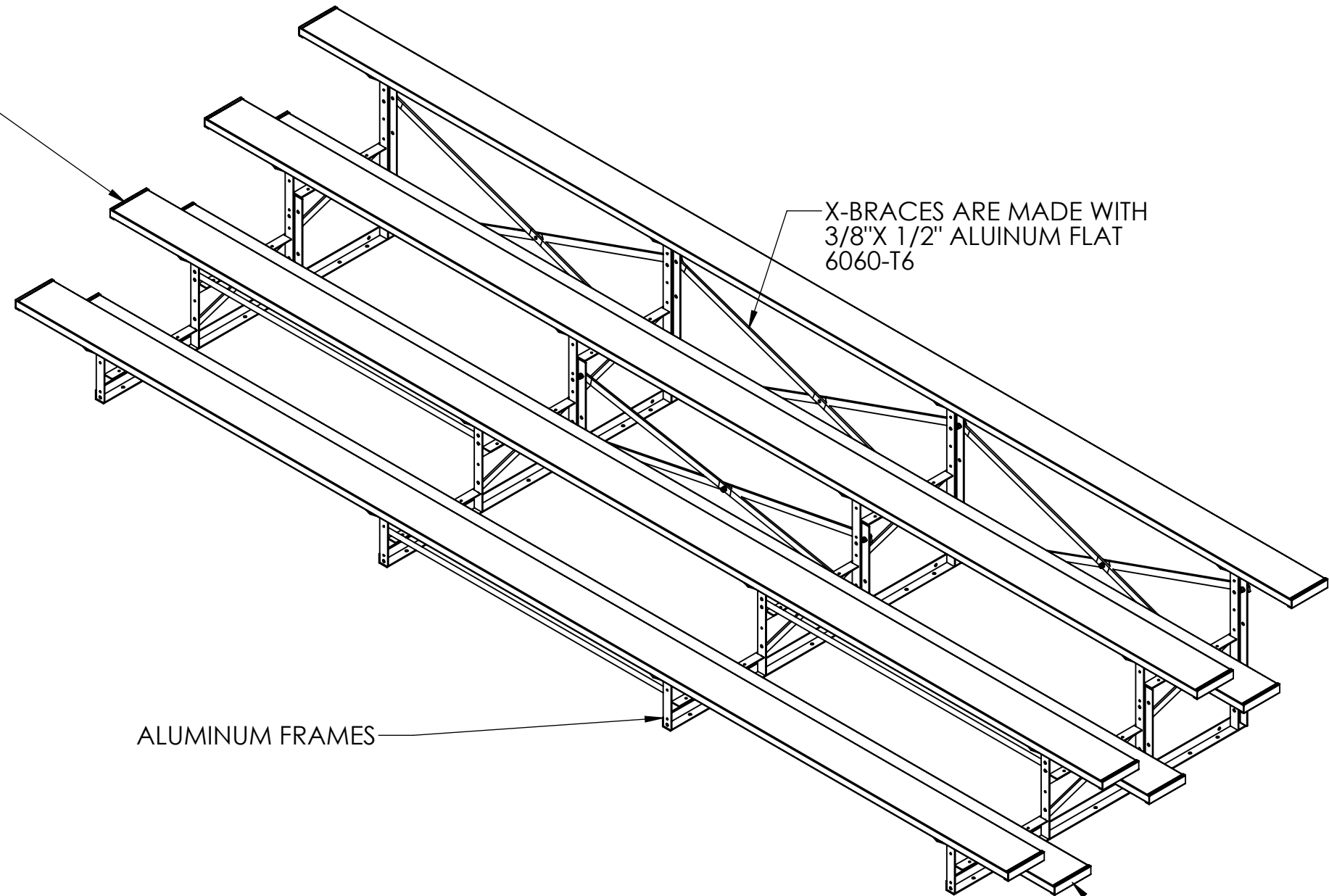


2"X 10" EXTRUDED ALUMINUM SEAT  
PLANKS WITH ANODIIZED FINISH  
.78 NOMINAL WALL

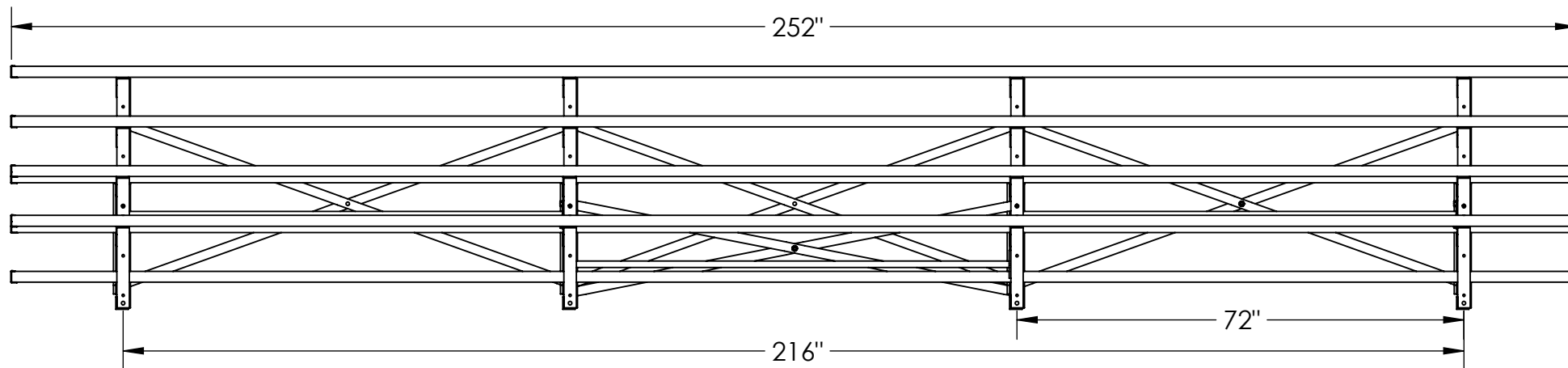


X-BRACES ARE MADE WITH  
3/8"X 1/2" ALUMINUM FLAT  
6060-T6



ALUMINUM FRAMES

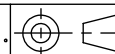
2"X 10" EXTRUDED ALUMINUM  
FOOT PLANKS WITH MILL FINISH  
.78 NOMINAL WALL



WGT: 440 LBS

GENERAL NOTES

DIMENSIONS ARE IN INCHES  
TOLERANCES: LINEAR: ± 1/16"  
ANGULAR: ± 1°



SHEET SIZE  
**B**

SCALE  
1:25

REV



**Kay Park Rec.**

CONFIDENTIAL DRAWING.  
INFORMATION IS NOT TO BE COPIED OR  
DISCLOSED TO OTHERS WITHOUT  
CONSENT OF KAY INDUSTRIES.  
SPECIFICATIONS SUBJECT TO CHANGE  
WITHOUT NOTICE.

DRAWN BY

JNB

3/14/2017

DESC:

4 ROW 21' ALUM. BLEACHER

APPROVED

MATL:

LAST SAVED

johnb

9/28/2017

**PART NO: BLA4A21**