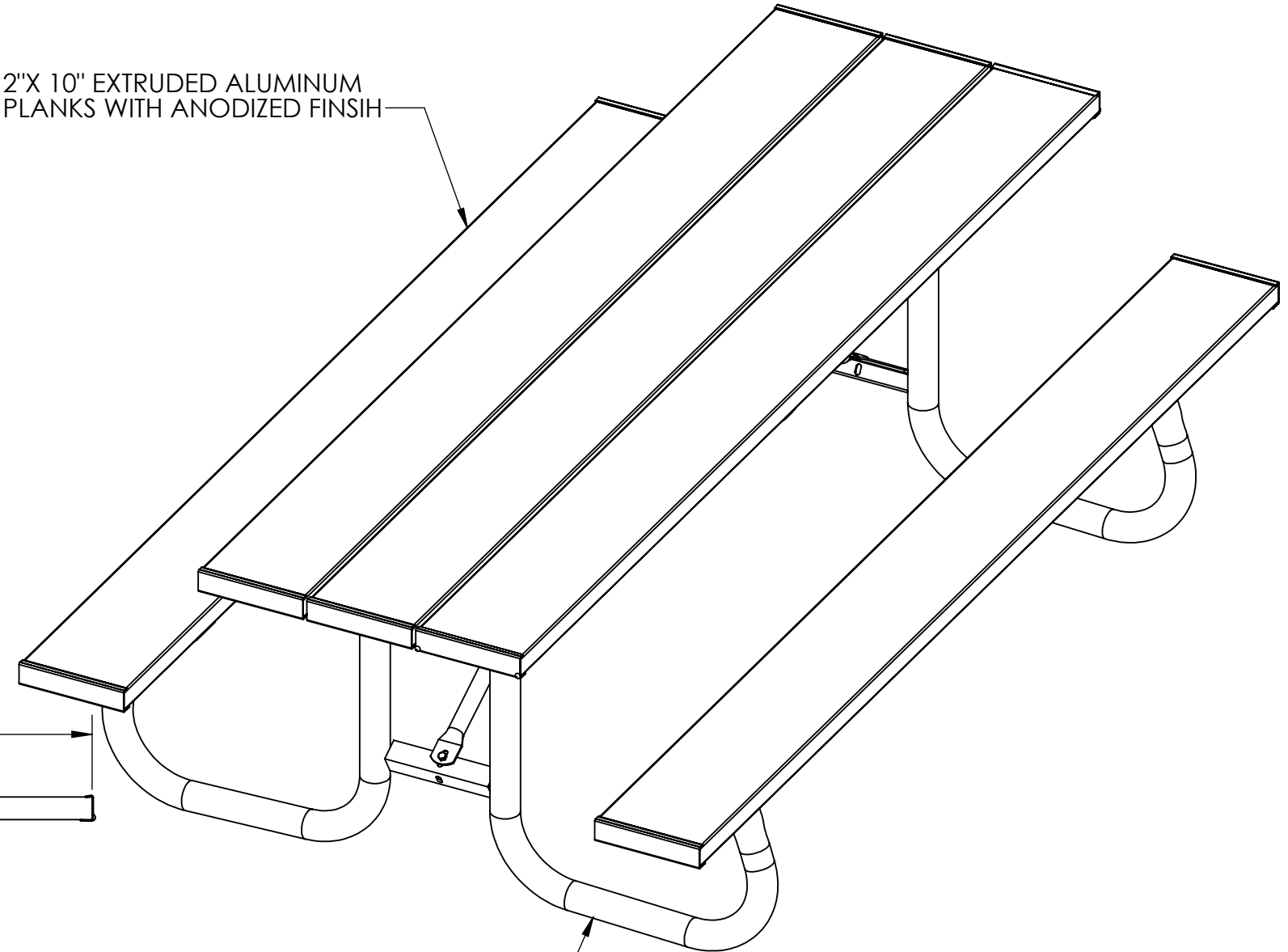
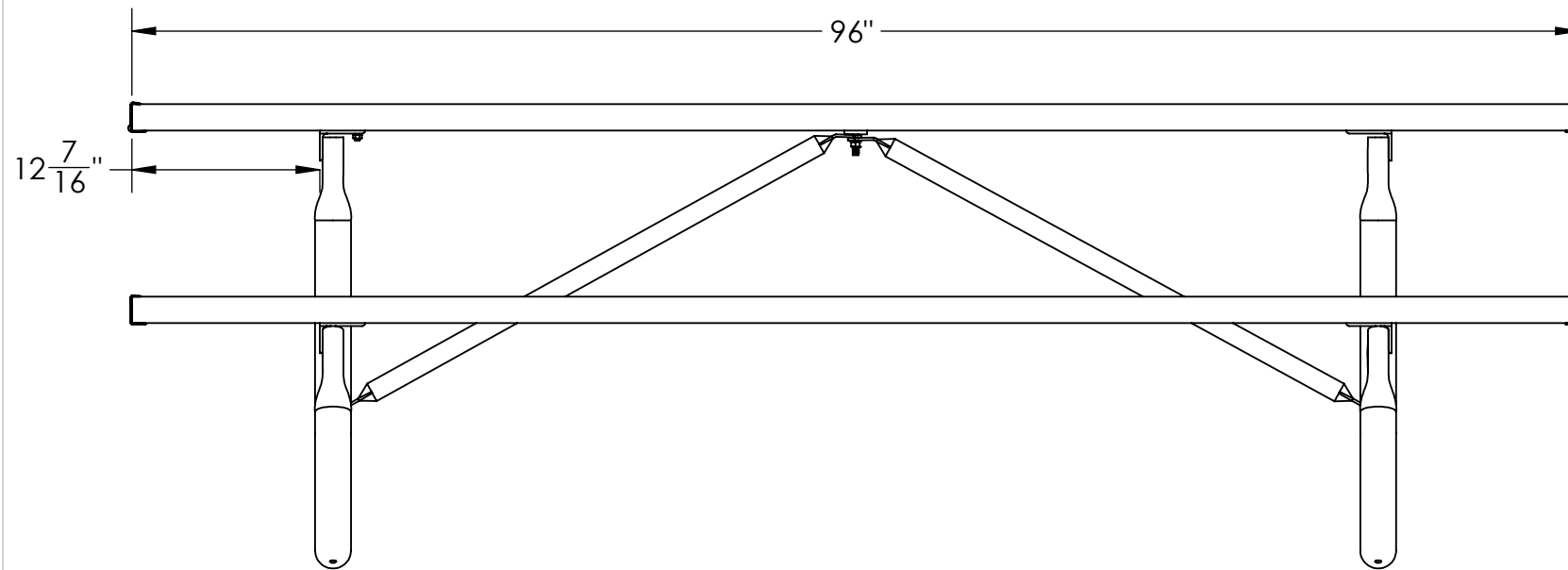




2"X 10" EXTRUDED ALUMINUM
PLANKS WITH ANODIZED FINISH



2 3/8" O.D. GALVANIZED LEGS



WGT: 175 LBS

GENERAL NOTES		<div>DIMENSIONS ARE IN INCHES TOLERANCES: LINEAR: ± 1/16 ANGULAR: ± 1°</div> <div></div>	SHEET SIZE B	SCALE 1:24	REV		Kay Park Rec.	
			DRAWN BY	JNB	3/18/2015	DESC:	8' J2 TABLE WITH ALUM. PLANKS	
			APPROVED			MATL:		
			LAST SAVED	davet	2/26/2018	PART NO: 8J2GA		
PATH TO PART OR ASSM - 8J2GA		S:\CADDRWGS\Solidworks\Tables\J2\		Configuration - Default		2/26/2018 11:06:33		SHEET 1 OF 2

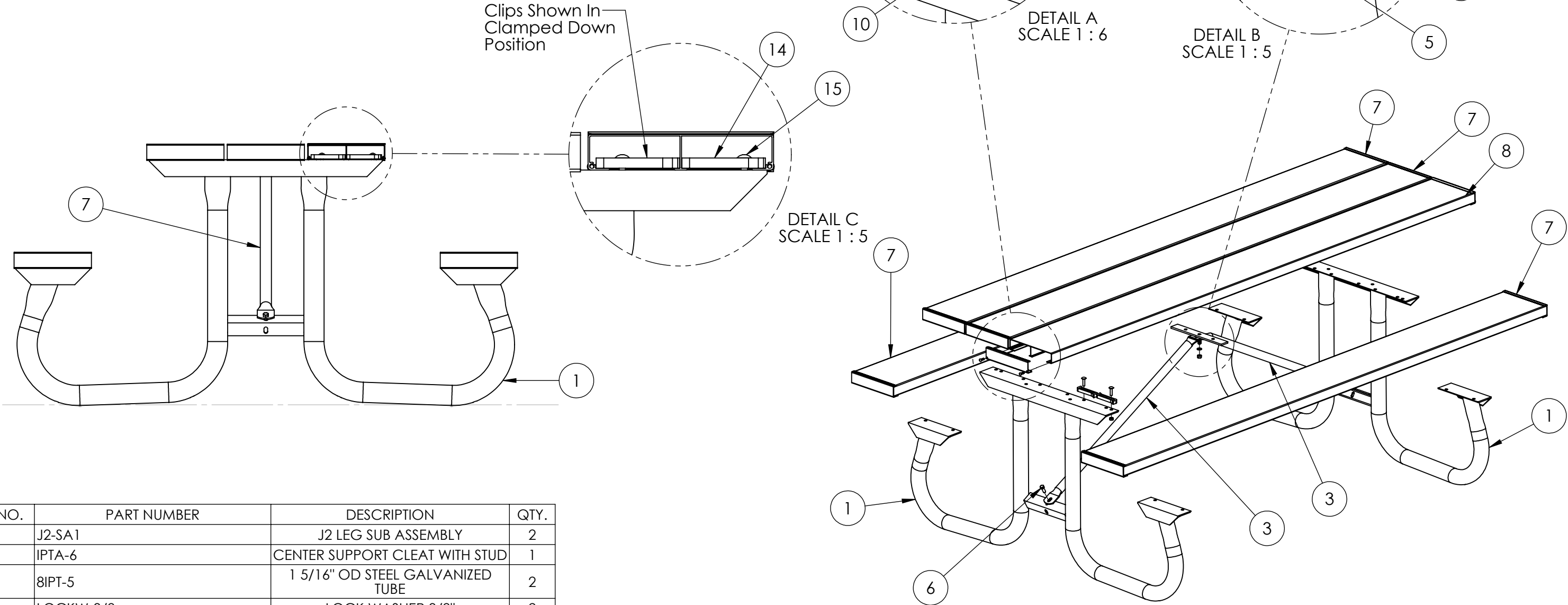
1. Place 3 Planks Side By Side, Upside Down and Measure to the Center of the Planks. Then Clip the Middle Brace Bar to the Middle Plank.

2. Set One of the Frames Upside Down with Bolt Holes Approximately 15" From the End of the Planks. Clip This Leg in Place Using (2) Plank Clips Per Plank.

3. Now Place the Diagonal Brace on the Brace Bar and Leg as Shown. Tighten Clips and Repeat this Procedure on the Other Table End. Make Sure the Leg Frames Face Inward Towards Each Other.

4. Turn the Table Right Side Up and Place (2) Seat Boards on the Seat Brackets, Attach Them with (2) Plank Clips On Each End.

5. Put the End Caps On After the Top and Seat Planks have Been Securely Fastened. Use the Drive Screws Provided and Use a sma;ll Hammer to Tap the Screws into the End Caps and on the Planks.



ITEM NO.	PART NUMBER	DESCRIPTION	QTY.
1	J2-SA1	J2 LEG SUB ASSEMBLY	2
2	IPTA-6	CENTER SUPPORT CLEAT WITH STUD	1
3	8IPT-5	1 5/16" OD STEEL GALVANIZED TUBE	2
4	LOCKW-3/8	LOCK WASHER 3/8"	2
5	HNUT 0.3750-16-D-N	3/8"-16 HEX NUT	2
6	HBOLT 0.3750-16x1x1-N	HEX HEAD BOLT 0.3750-16x 1.00	1
7	8IA-7	2"x 10" SEAT PLANK 95 7/8" ANODIZED	4
8	8IA-7	95.875 No End Caps	1
9	IA-10	ALUM 2x10 END CAPS 9 1/8"	2
10	DRIVES-3/4	DRIVE SCREW 3/4"	4
11	IA-12	2"x 10" PLANK CLIP	2
12	RHSSNBOLT 0.3125-18x1.25x1.25-N	CARRIAGE BOLT 0.3125-18x1.25	2
13	NUT-5/16	HEX FLANGED NUT 5/16-18	2

GENERAL NOTES

DIMENSIONS ARE IN INCHES
TOLERANCES: LINEAR: $\pm 1/16$
ANGULAR: $\pm 1^\circ$

CONFIDENTIAL DRAWING.
INFORMATION IS NOT TO BE COPIED OR
DISCLOSED TO OTHERS WITHOUT
CONSENT OF KAY INDUSTRIES.
SPECIFICATIONS SUBJECT TO CHANGE
WITHOUT NOTICE.



SHEET SIZE
B

SCALE
1:32

REV



Kay Park Rec.

8' J2 TABLE WITH ALUM. PLANKS

DRAWN BY

JNB

3/18/2015

DESC:

APPROVED

MATL:

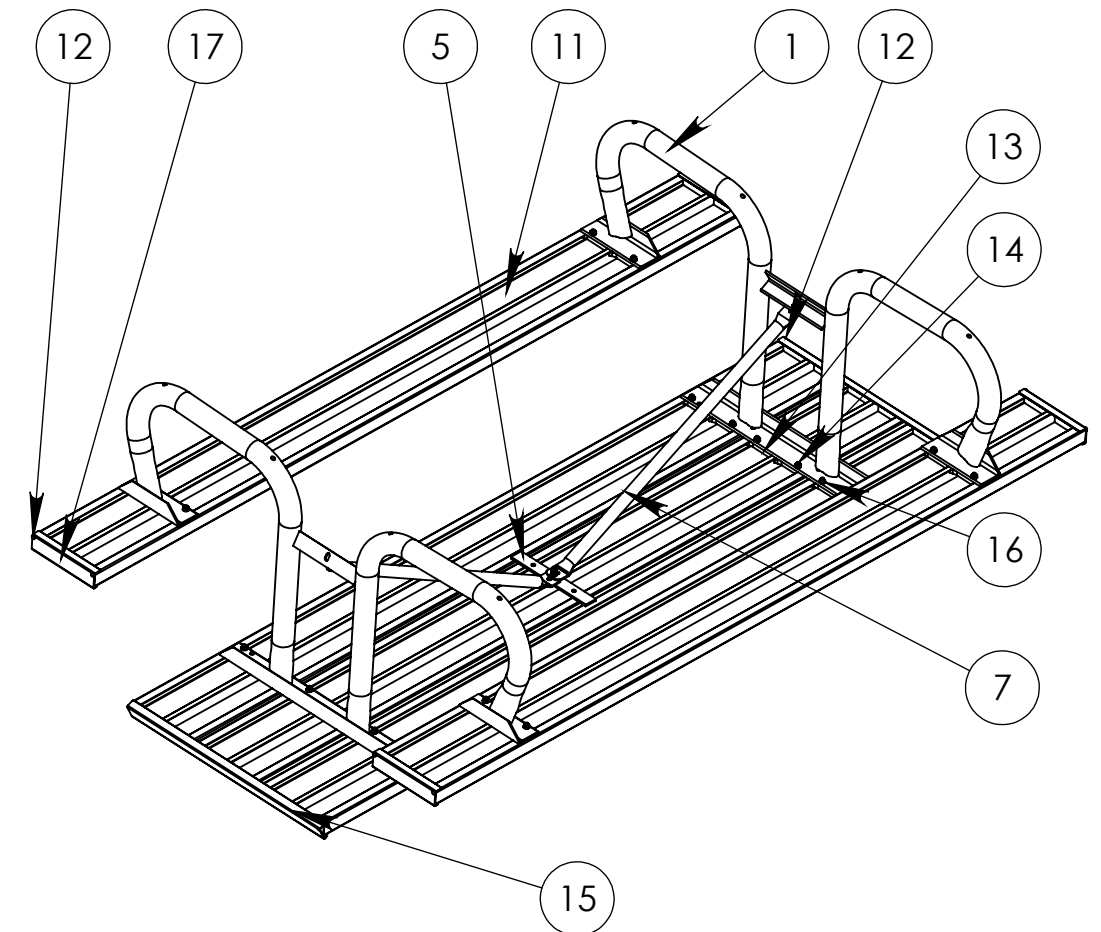
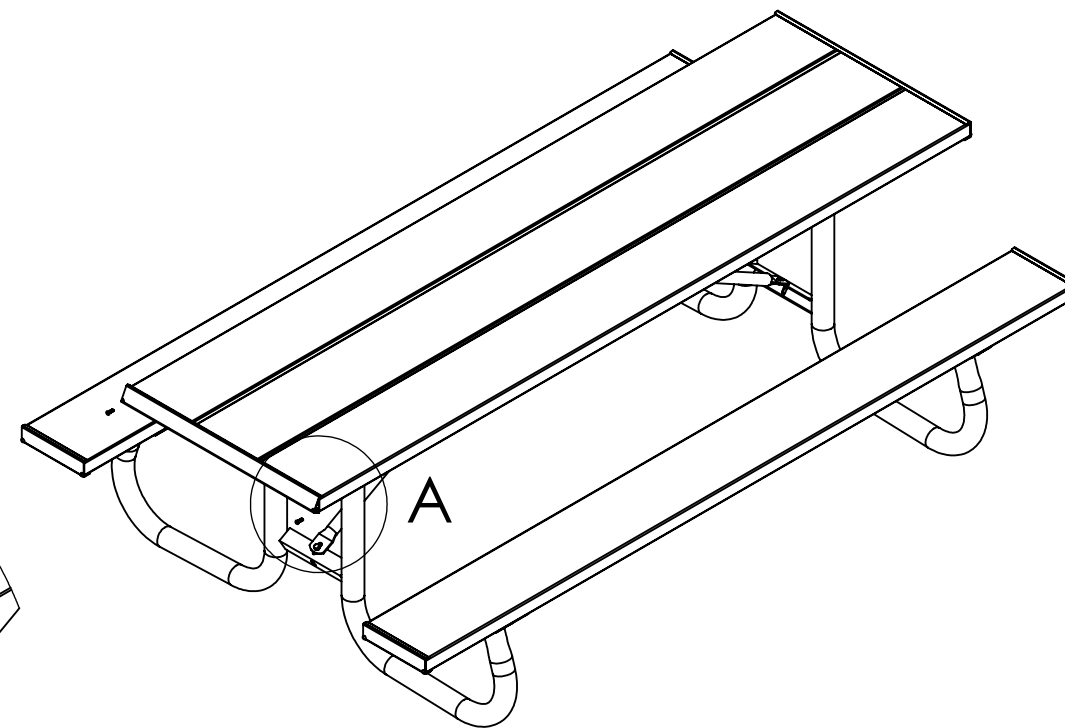
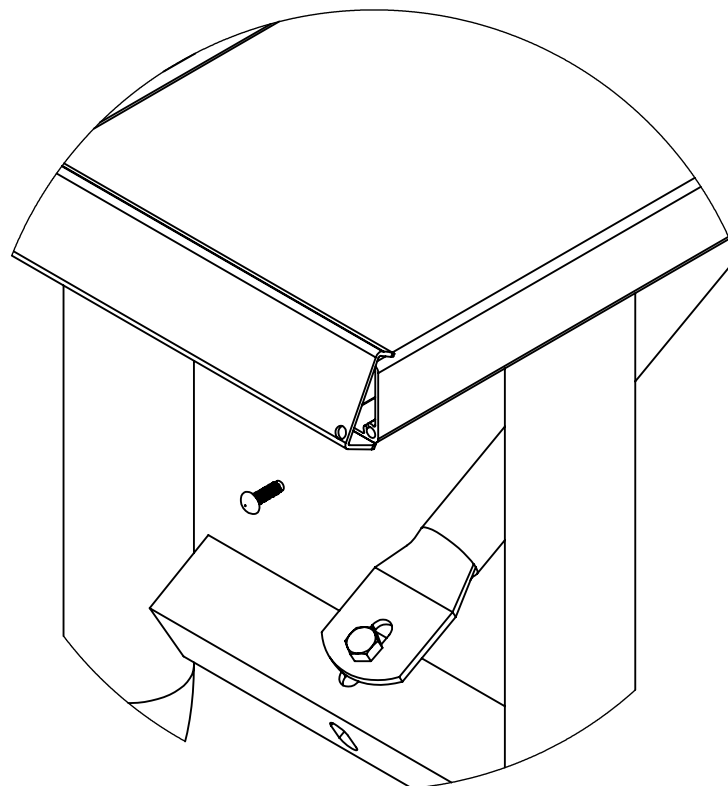
LAST SAVED


davet

2/26/2018

PART NO: 8J2GA

1. Start by Laying One of the 8' Planks Upside Down on a Flat Surface. Measure to the Center of the Plank. Attach the Center Support Cleat to the center of the Plank with Plank Clips.
2. Set One of the Frames Upside Down with Bolt Holes Approximately 15" From the End of the Planks. Clip This Leg in Place Using (2) Plank Clips. Finger Tighten (2) 5/16"- 18 Flanged Nuts on the Plank.
3. Now Place the Diagonal Brace on the Center Support Cleat and Leg as Shown. Square up the Leg on the Plank. Tighten Clips and Repeat this Procedure on the Other Table End. Make Sure the Leg Frames Face Inward Towards Each Other.
4. Place the other (2) Top Planks under the Table Leg Frames. Center the Planks around the center Plank and make the overall width equal to the length of the end cap. Install Plank Clips, Bolts and Flanged Nuts. Tighten all of the clip nuts so that later the planks don't slid when installing the drive screws.
5. Install the Seat Planks in a similar manner. Turn the Table over.
6. Place the top edge of the end cap on the top edge of the table. Making sure the drive screw holes line up with the drive screw chace in the plank. Use a rubber faced mallet, tap the end cap into place.
7. Use a small hammer to drive the drive screws into place. Repeat on the remaining end caps.



GENERAL NOTES:		UNLESS OTHERWISE SPECIFIED:		NAME	DATE	 Kay Park Rec		
DIMENSIONS ARE IN INCHES TOLERANCES: FRACTIONAL ± 1/32 BEND ± 1/2" THREE PLACE DECIMAL ± .005 Do Not Scale Drawing		DRAWN			2/7/2018	TITLE:		
		CHECKED				DESC.		
		ENG APPR.						
		MFG APPR.						
MATERIAL		Last Saved	2/22/2018 10:44:18 AM		S:\CADDRWGS\Solidworks\Bleachers\ASSEMBLY INSTRUCTION DRAWINGS\			
		COMMENTS:		SIZE B		PART NO. 3 Plank End Cap Install		REV
		SHEET 1 OF 1						
Path to Part or Assy - 3 Plank End Cap Install		S:\CADDRWGS\Solidworks\Bleachers\ASSEMBLY INSTRUCTION DRAWINGS\				Assy Inst		