

LEAVE ALL BOLTS LOOSE UNTIL ALL ARE IN PLACE.

1.) Place the top planks upside down on something that will not mark the surface of table . (Card Board or 2"x 4" Boards) as an example.

2. Place 3ea 2"x 10"x 6' PLANKS on this surface on the ground first as shown.

LEAVE ALL BOLTS LOOSE UNTIL ALL ARE IN PLACE.

3. Place one of the J2 LEG SUB ASSEMBLY on the predrilled holes. The top angle holes & leg spacer hole (for Table Brace) should face the center of the table, use the Hardware as shown in the DETAIL A

4. Place second of the J2 LEG SUB ASSEMBLY on the predrilled holes. The top angle holes & leg spacer hole (for Table Brace) should face the center of the table.

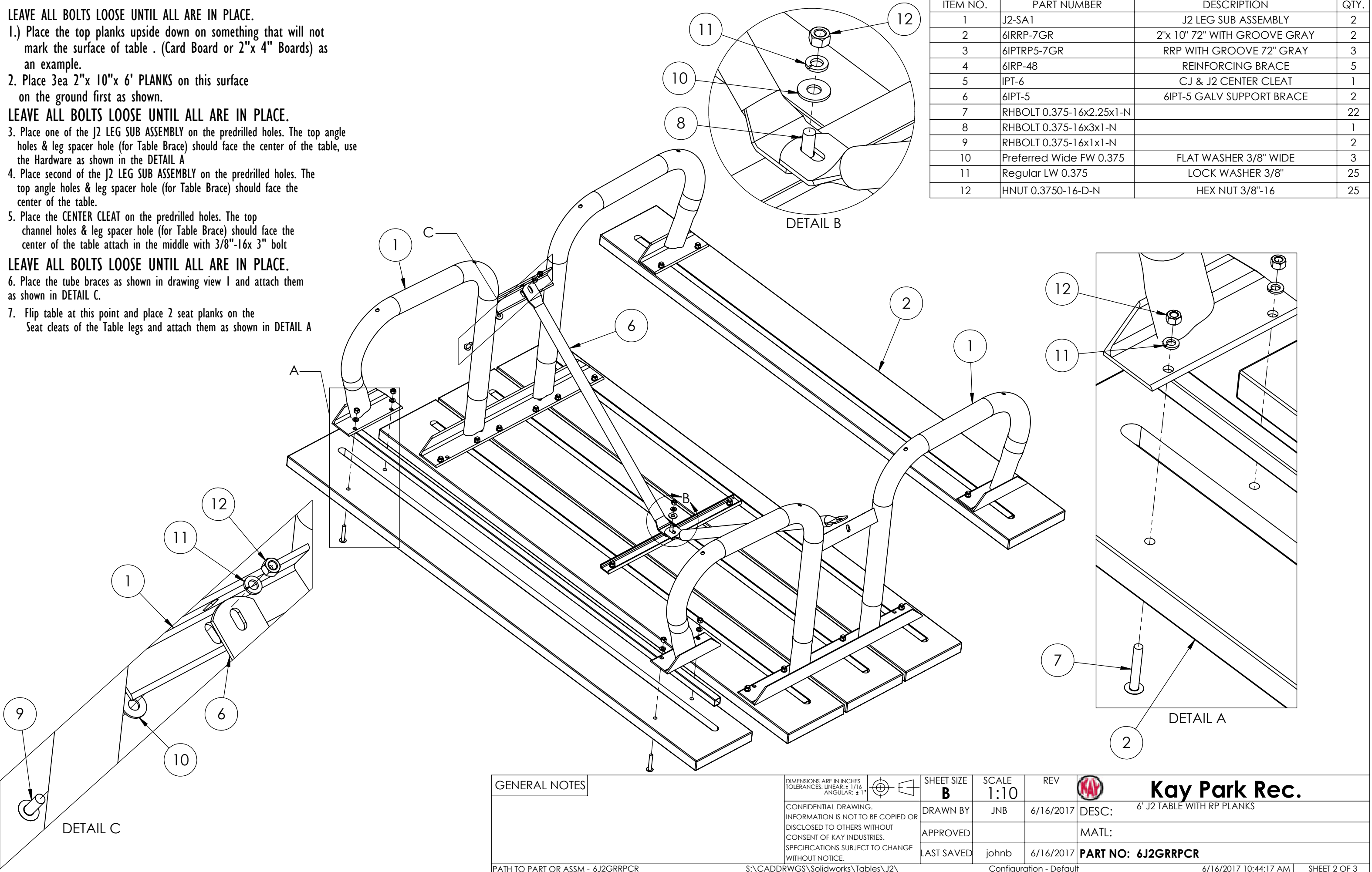
5. Place the CENTER CLEAT on the predrilled holes. The top channel holes & leg spacer hole (for Table Brace) should face the center of the table attach in the middle with 3/8"-16x 3" bolt

LEAVE ALL BOLTS LOOSE UNTIL ALL ARE IN PLACE.

6. Place the tube braces as shown in drawing view I and attach them as shown in DETAIL C.

7. Flip table at this point and place 2 seat planks on the Seat cleats of the Table legs and attach them as shown in DETAIL A

ITEM NO.	PART NUMBER	DESCRIPTION	QTY.
1	J2-SA1	J2 LEG SUB ASSEMBLY	2
2	6IRRP-7GR	2"x 10" 72" WITH GROOVE GRAY	2
3	6IPTRP5-7GR	RRP WITH GROOVE 72" GRAY	3
4	6IRP-48	REINFORCING BRACE	5
5	1PT-6	CJ & J2 CENTER CLEAT	1
6	6IPT-5	6IPT-5 GALV SUPPORT BRACE	2
7	RHBOLT 0.375-16x2.25x1-N		22
8	RHBOLT 0.375-16x3x1-N		1
9	RHBOLT 0.375-16x1x1-N		2
10	Preferred Wide FW 0.375	FLAT WASHER 3/8" WIDE	3
11	Regular LW 0.375	LOCK WASHER 3/8"	25
12	HNUOT 0.3750-16-D-N	HEX NUT 3/8"-16	25



GENERAL NOTES

DIMENSIONS ARE IN INCHES
TOLERANCES: LINEAR: ± 1/16
ANGULAR: ± 1°

CONFIDENTIAL DRAWING.
INFORMATION IS NOT TO BE COPIED OR
DISCLOSED TO OTHERS WITHOUT
CONSENT OF KAY INDUSTRIES.
SPECIFICATIONS SUBJECT TO CHANGE
WITHOUT NOTICE.

SHEET SIZE
B

SCALE
1:10

REV



Kay Park Rec.

DRAWN BY

JNB

6/16/2017

DESC:

6' J2 TABLE WITH RP PLANKS

APPROVED

MATL:

LAST SAVED

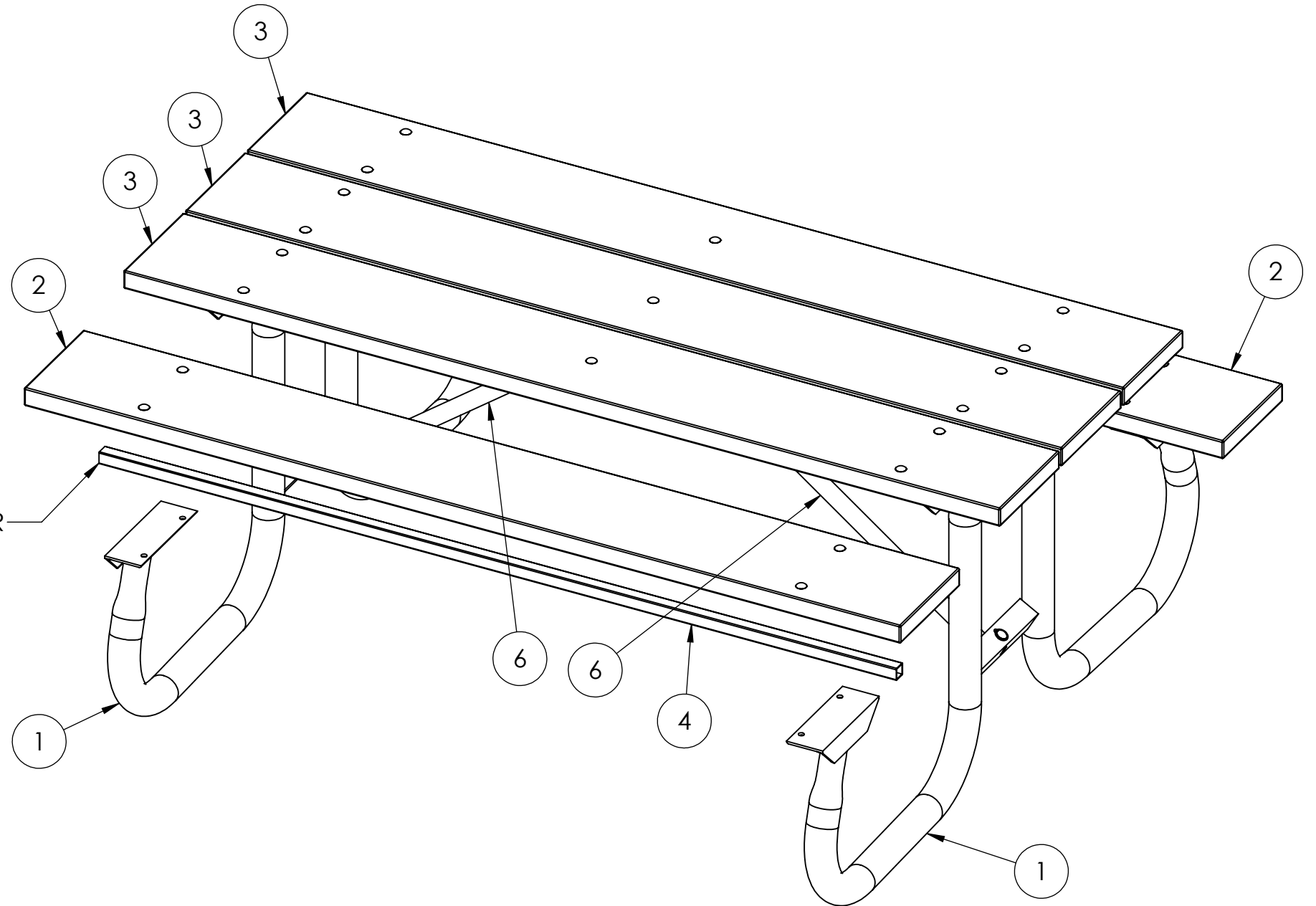
johnb


6/16/2017

PART NO: 6J2GRRPCR

ITEM NO.	PART NUMBER	DESCRIPTION	Default/ QTY.
1	J2-SA1	J2 LEG SUB ASSEMBLY	2
2	6IRRP-7GR	2"x 10" 72" WITH GROOVE GRAY	2
3	6IPTRP5-7GR	RRP WITH GROOVE 72" GRAY	3
4	6IRP-48	REINFORCING BRACE	5
5	IPT-6	CJ & J2 CENTER CLEAT	1
6	6IPT-5	6IPT-5 GALV SUPPORT BRACE	2
7	RHBOLT 0.375-16x2.25x1-N		22
8	RHBOLT 0.375-16x3x1-N		1
9	RHBOLT 0.375-16x1x1-N		2
10	Preferred Wide FW 0.375	FLAT WASHER 3/8" WIDE	3
11	Regular LW 0.375	LOCK WASHER 3/8"	25
12	HNUT 0.3750-16-D-N	HEX NUT 3/8"-16	25

1"X 1" STEEL REINFORCEMENT BAR
INSTALLED AT MANUFACTUER



GENERAL NOTES	DIMENSIONS ARE IN INCHES TOLERANCES: LINEAR: ± 1/16 ANGULAR: ± 1°	SHEET SIZE B	SCALE 1:10	REV		Kay Park Rec.
	CONFIDENTIAL DRAWING. INFORMATION IS NOT TO BE COPIED OR DISCLOSED TO OTHERS WITHOUT CONSENT OF KAY INDUSTRIES. SPECIFICATIONS SUBJECT TO CHANGE WITHOUT NOTICE.	DRAWN BY	JNB	6/16/2017	DESC:	6' J2 TABLE WITH RP PLANKS
		APPROVED			MATL:	
		LAST SAVED	johnb	6/16/2017	PART NO: 6J2GRRPCR	