

1/8"x 1/2"x 1 1/2"
C Channel Center
Support Cleat

DETAIL A
SCALE 1 : 4

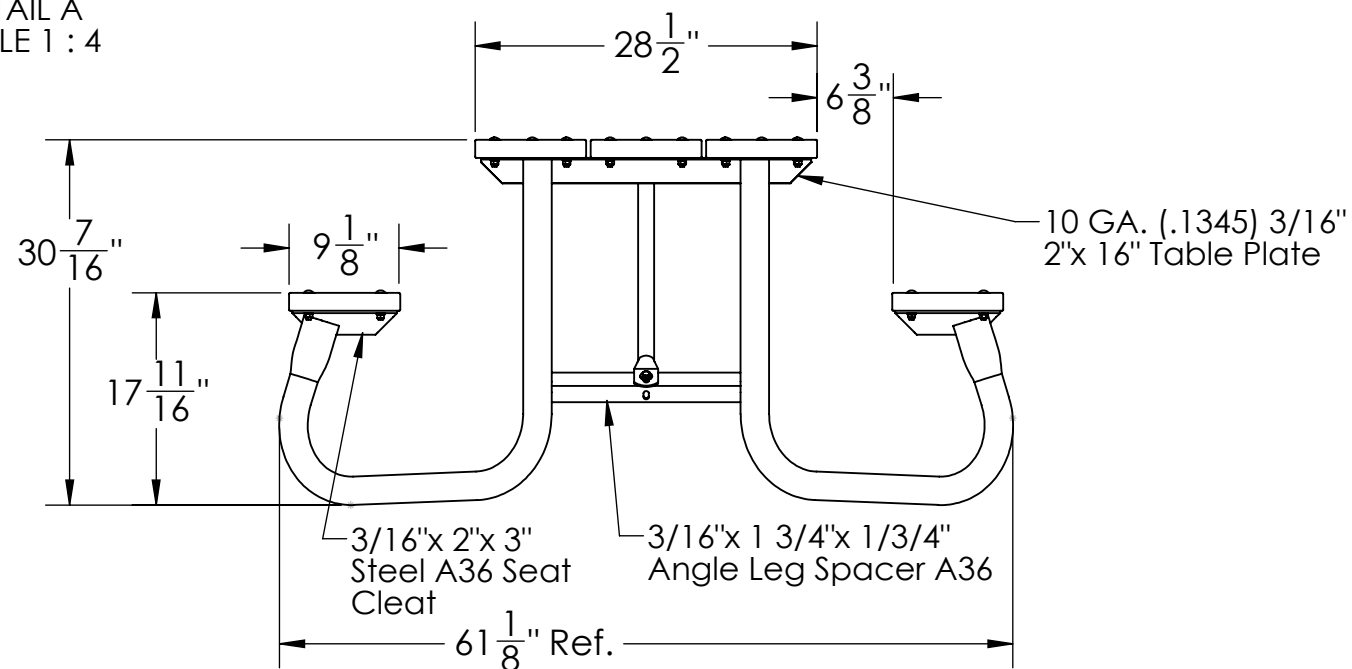
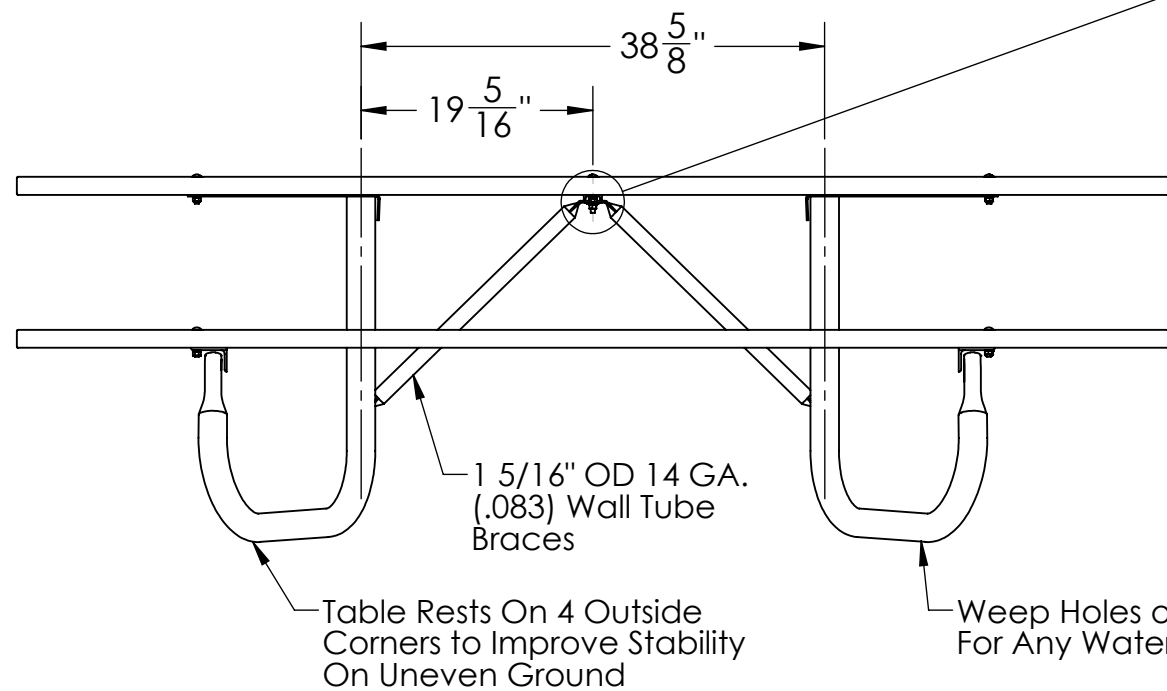


Table Frame Can Be Either Powder Coated
To A Color Or Galvanized Per Customers Request

GENERAL NOTES

UNIT WEIGHT: 294 LBS.

Built In House

PATH TO PART OR ASSM - S:\CADDRWGS\Solidworks\Tables\J2\New Handicap Table 062016\

DIMENSIONS ARE IN INCHES
TOLERANCES: LINEAR: ± 1/16"
ANGULAR: ± 1°

CONFIDENTIAL DRAWING.
INFORMATION IS NOT TO BE COPIED OR
DISCLOSED TO OTHERS WITHOUT
CONSENT OF KAY INDUSTRIES.
SPECIFICATIONS SUBJECT TO CHANGE
WITHOUT NOTICE.

SHEET SIZE
B

DRAWN BY
APPROVED
LAST SAVED

SCALE
1:24

REV
DAT
dave

REV
4/18/2018
4/19/2018



DESC:
MATL:

K Industries, Inc.

8 FT. UNIVERSAL WHEEL CHAIR TABLE WITH 2"x 10"
TREATED TOP and SEAT PLANKS

PART NO: 8J2GW-UWC

Configuration - Default

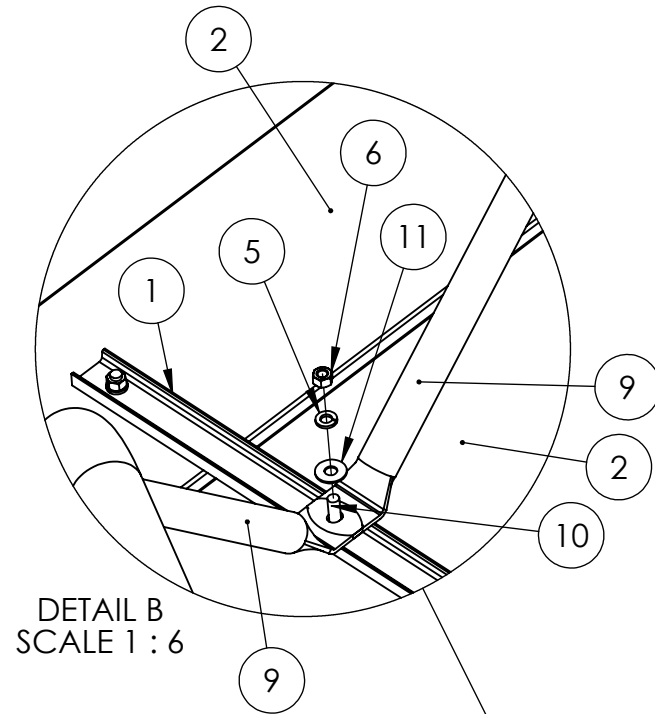
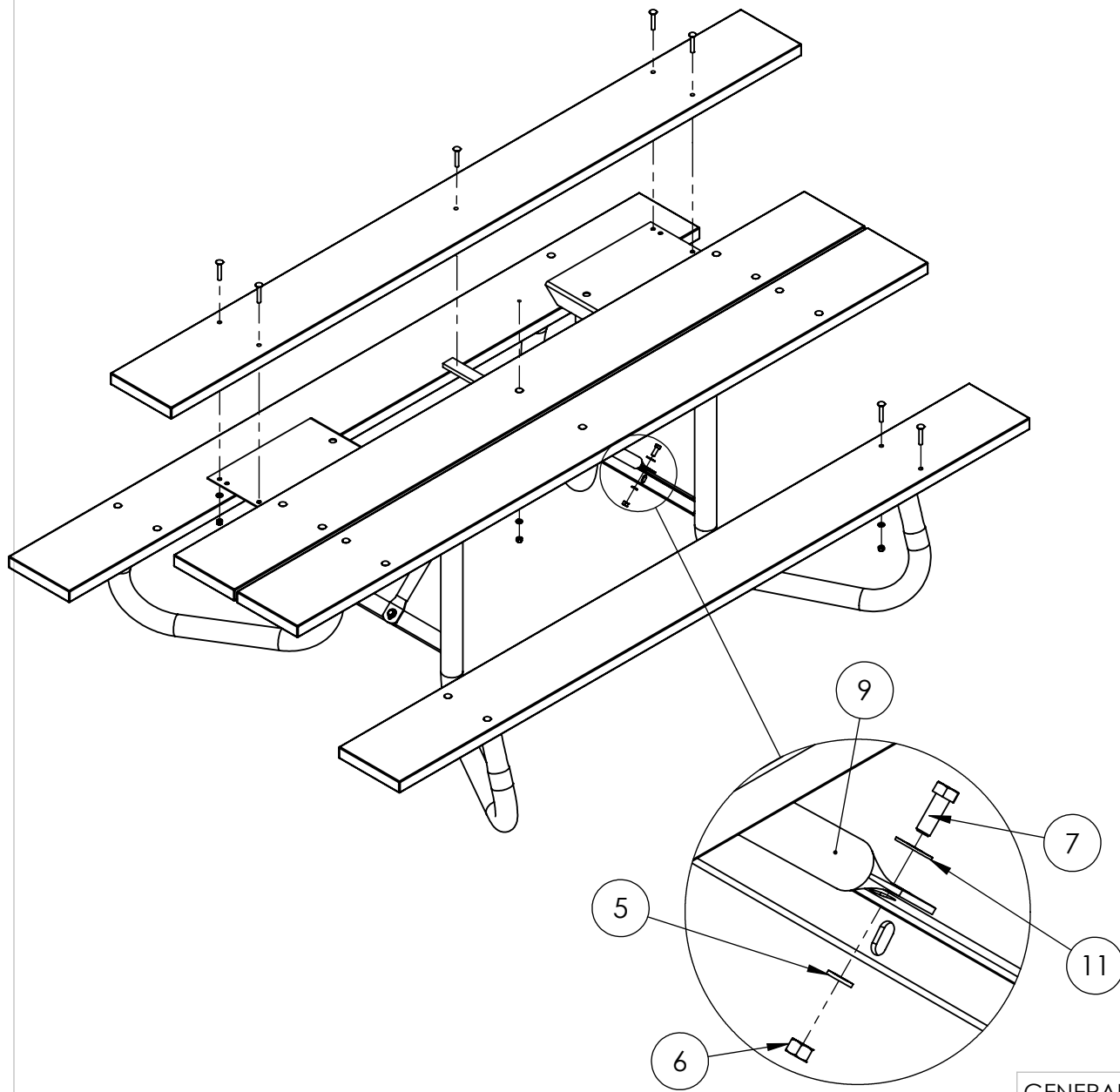
4/19/2018 07:40:06

SHEET 1 OF 2

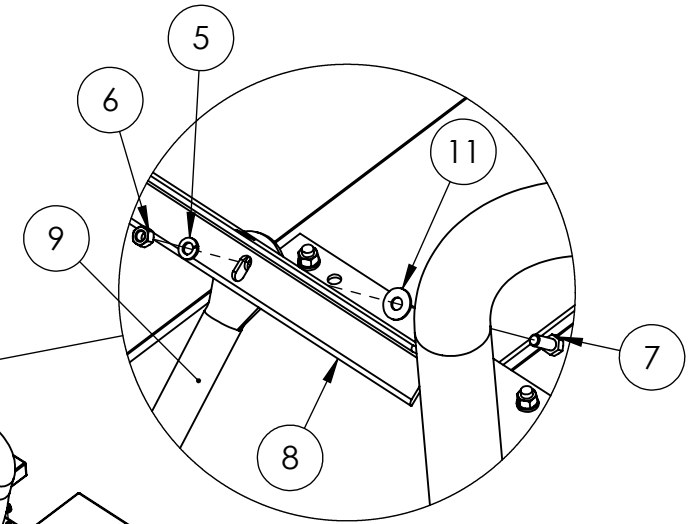
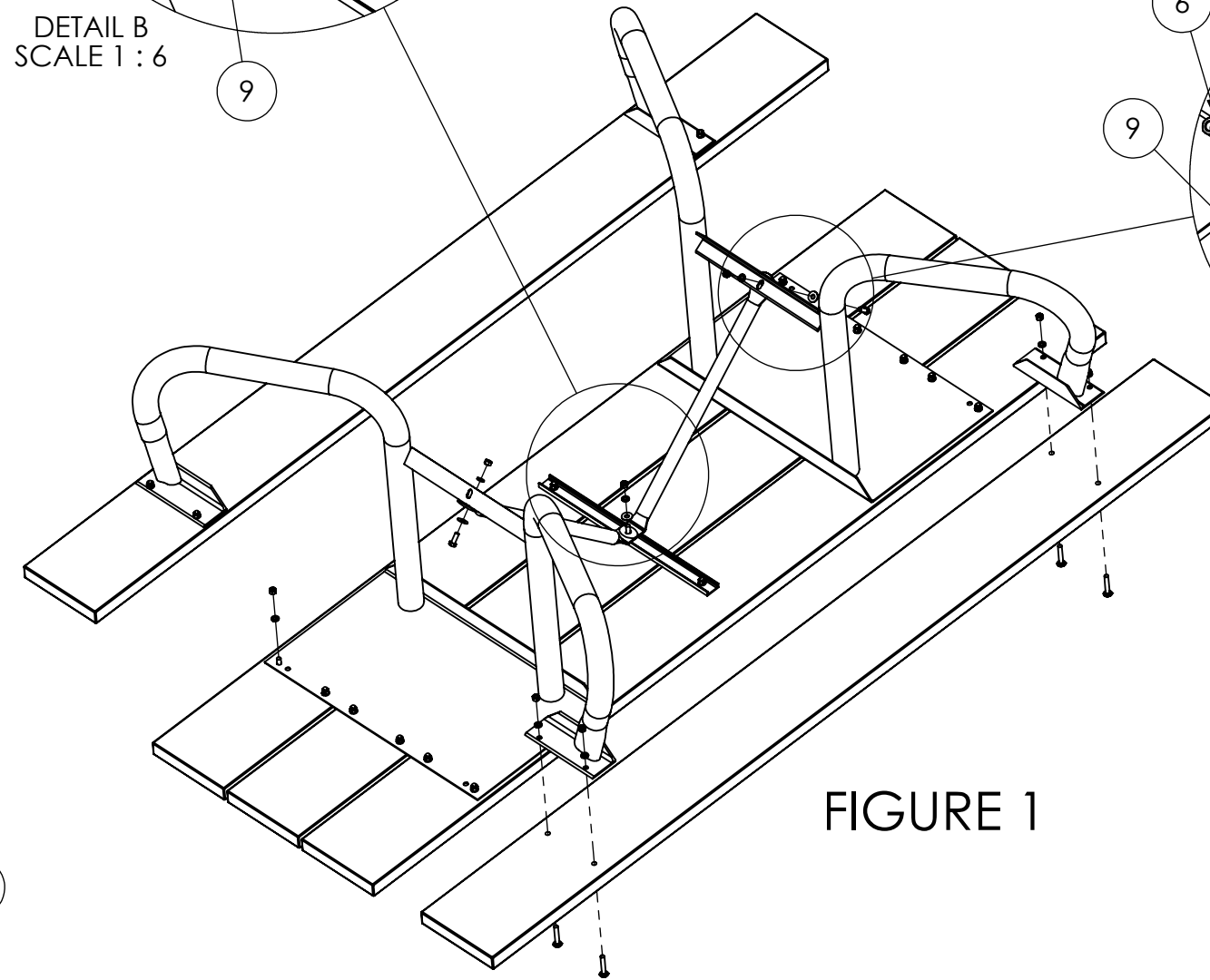
IT MAY BE EASIER TO LAY THE FRAMES UPSIDE DOWN AS SHOWM IN **FIGURE 1**. MAKE SURE YOU LAY THE BOARDS ON AFLAT SURFACE SUCH AS THE CARDBOARD PACKAGING.

1. Put the 2 1/4" Carriage Bolts in the Boards with the (5) Holes. There will be (3) Boards, These are used for the Table Top.(Note the 3" Long Carriage Bolt is used for the Middle Hole in the Middle Board.) Place the Head of the Bolts on the Routed Side of the Boards.
2. Match the Top Board Holes with the Holes on the Table Top Angle Iron Cleat, Place a Lock Washer and Nut on the Bolts. Finger Tighten at This Time. Note the Orientation of the Table Leg Frames
3. Place the Seat Planks on with the Routed Sides Facing Towards the Ground or The Side You Would Sit On. Finger Tighten the Bolts and Nuts at This Time.
4. Place the Center C Channel On the Center Holes of the Table Top. Use the 3" Carriage Bolt for the Center Hole Only.
5. Fasten the Support Braces to the Table Frame and Center Top Cleat as Shown, Finger Tighten Bolts, and Nuts. Now You Should be Able to Square up and Tighten all Hardware on the Table.

NO.	PART NUMBER	DESCRIPTION	MATERIAL	QTY.
1	IPTC-6	1/2"x 1 1/2" CHANNEL COATED CENTER CLEAT	1/8"x 1/2"x 1 1/2" CHANNEL BAR SIZE A-36	1
2	8IPT5-7	TABLE TOP WOOD PLANK	2"x 10"x 8' TREATED SOUTHERN YELLOW PINE	3
3	8IW4-7	2"x 10" SEAT PLANK TREATED SYP		2
4	RHSNBOLT 0.375-16x2.25x1-N	CARRIAGE BOLT 3/8"-16x 2 1/4"		22
5	Regular LW 0.375	LOCK WASHER 3/8"		25
6	HNUT 0.3750-16-D-N	HEX NUT 3/8"-16		25
7	HBOLT 0.3750-16x1x1-N	3/8"-16x 1" HEX HEAD BOLT		2
8	J2U-SA1	UNIVERSAL ADA TABLE LEG SET		2
9	8IWC-5	1 5/16" OD J2 WC TABLE CROSS BRACE	1 5/16" OD X 14 GAUGE ROUND MECH TUBING	2
10	RHSNBOLT 0.375-16x3x1-N	RHSN CARRIAGE BOLT 3/8"-16 x 3"		1
11	FLATW-3/8	FLAT WASHER 3/8"		3



DETAIL B
SCALE 1 : 6



DETAIL C
SCALE 1 : 6

FIGURE 1

DETAIL D
SCALE 1 : 4

GENERAL NOTES

Built In House

PATH TO PART OR ASSM - S:\CADDRWGS\Solidworks\Tables\J2\New Handicap Table 062016\

DIMENSIONS ARE IN INCHES
TOLERANCES: LINEAR: ± 1/16"
ANGULAR: ± 1°

CONFIDENTIAL DRAWING.
INFORMATION IS NOT TO BE COPIED OR
DISCLOSED TO OTHERS WITHOUT
CONSENT OF KAY INDUSTRIES.
SPECIFICATIONS SUBJECT TO CHANGE
WITHOUT NOTICE.

SHEET SIZE
B

DRAWN BY

APPROVED

LAST SAVED

SCALE
1:24

REV

4/18/2018

davet

Configuration - Default



K Industries, Inc.

DESC: 8 FT. UNIVERSAL WHEEL CHAIR TABLE WITH 2"x 10" TREATED TOP and SEAT PLANKS

MATL:

PART NO: 8J2GW-UWC

4/19/2018 07:40:06

SHEET 2 OF 2