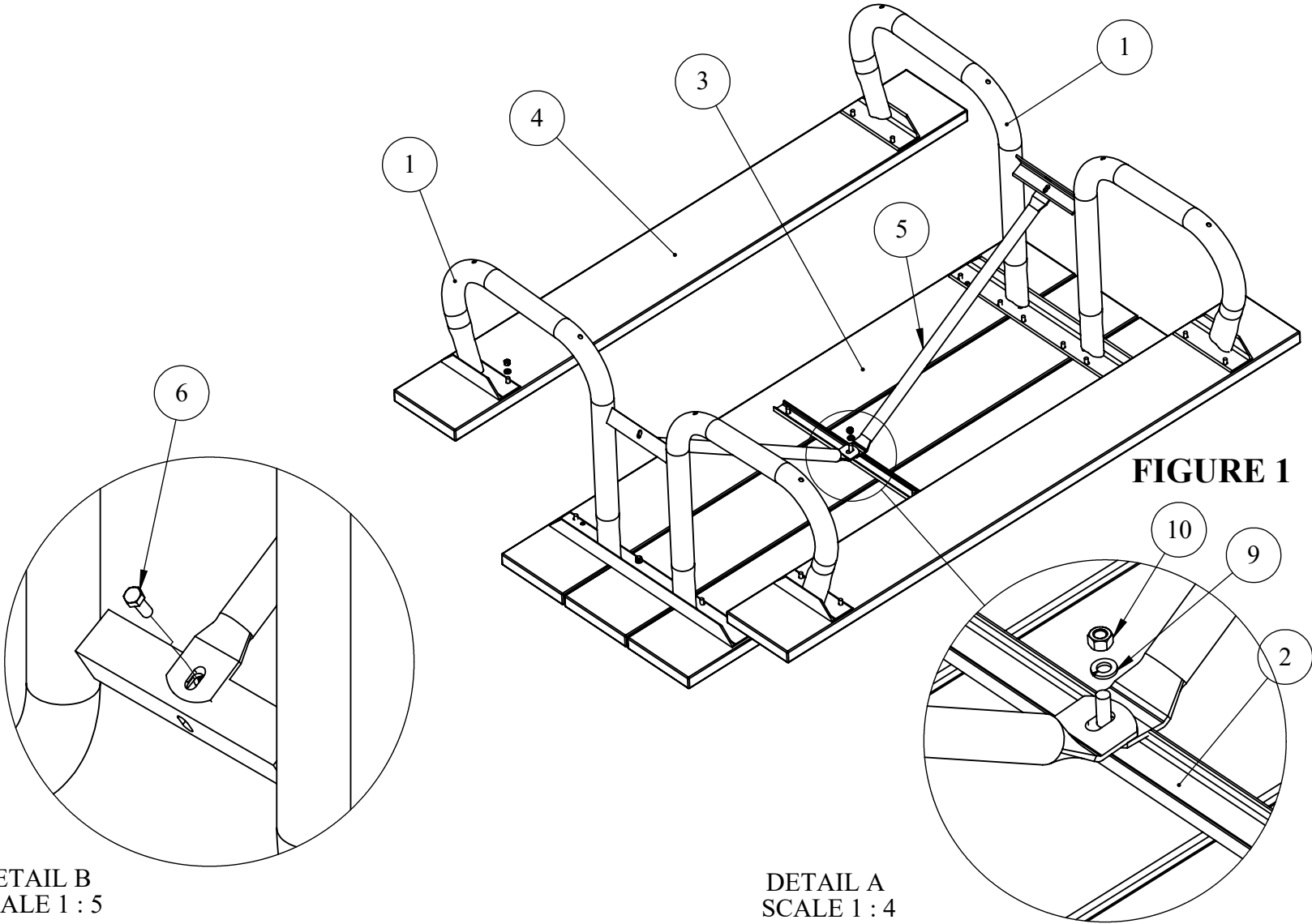
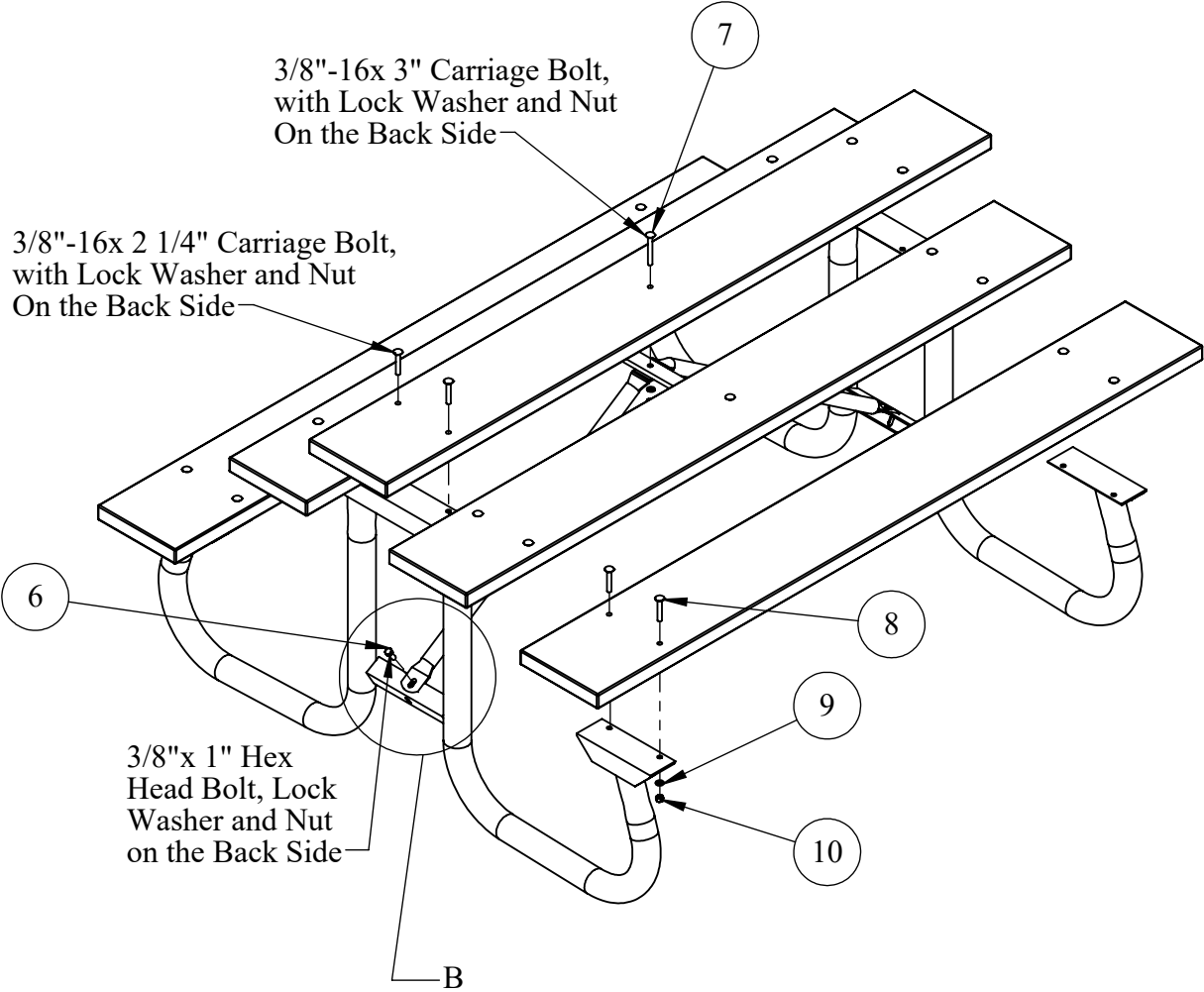


IT MAY BE EASIER TO LAY THE FRAMES UPSIDE DOWN AS SHOWM IN **FIGURE 1**.  
MAKE SURE YOU LAY THE BOARDS ON AFLAT SURFACE SUCH AS THE CARDBOARD  
PACKAGING.

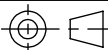
1. Put the 2 1/4" Carriage Bolts in the Boards with the (5) Holes. There will be (3) Boards, These are used for the Table Top.( Note the 3" Long Carriage Bolt is used for the Middle Hole in the Middle Board.) Place the Head of the Bolts on the Routered Side of the Boards.
2. Match the Top Board Holes with the Holes on the Table Top Angle Iron Cleat, Place a Lock Washer and Nut on the Bolts. Finger Tighten at This Time. Note the Orientation of the Table Leg Frames in **FIGURE 1**.
3. Place the Seat Planks on with the Routed Sides Facing Towards the Ground or The Side You Would Sit On. Finger Tighten the Bolts and Nuts at This Time.
4. Place the Center C Channel On the Center Holes of the Table Top. Use the 3" Carriage Bolt for the Center Hole Only.
5. Fasten the Support Braces to the Table Frame and Center Top Cleat as Shown, Finger Tighten Bolts, and Nuts. Now You Should be Able to Square up and Tighten all Hardware on the Table.

ITEM NO.	PART NUMBER	DESCRIPTION	EXPLODE VIEW/Table Assembly/QTY.
1	J2-SA1	J2 LEG SUB ASSEMBLY	2
2	IPTC-6	1/2"x 1 1/2" CHANNEL COATED CENTER CLEAT	1
3	6IPT5-7	6' 2"x 10" SYP TABLE TOP PLANK	3
4	6IW4-7	6' 2"x 10" SYP TABLE and SEAT PLANK	2
5	6IPT-5	6IPT-5 GALV SUPPORT BRACE	2
6	HBOLT 0.3750-16x1x1-N	3/8"-16x 1" Hex Head Bolt	2
7	RHSNBOLT 0.375-16x3x1-N	3/8"-16x 3" CARRIAGE BOLT	1
8	RHSNBOLT 0.375-16x2.25x1-N	3/8"x 2 1/4" CARRIAGE BOLT	22
9	LOCKW-3/8	LOCK WASHER 3/8"	25
10	HNUT 0.3750-16-D-N	3/8"-16 HEX NUT	25



GENERAL NOTES

DIMENSIONS ARE IN INCHES  
TOLERANCES: LINEAR:  $\pm 1/16$   
ANGULAR:  $\pm 1^\circ$



SHEET SIZE  
**B**

SCALE  
**1:16**

REV



**Kay Park Rec.**

CONFIDENTIAL DRAWING.  
INFORMATION IS NOT TO BE COPIED OR  
DISCLOSED TO OTHERS WITHOUT  
CONSENT OF KAY INDUSTRIES.  
SPECIFICATIONS SUBJECT TO CHANGE  
WITHOUT NOTICE.

DRAWN BY

JNB

9/22/2014

DESC:

6' J2 TABLE W/ WOOD PLANKS

APPROVED

MATL:

LAST SAVED

johnb

6/20/2017

**PART NO: 6J2GW**