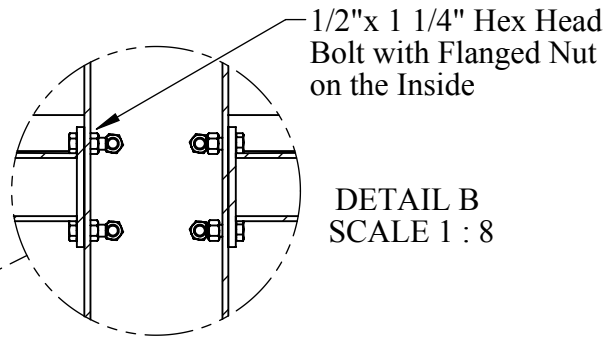
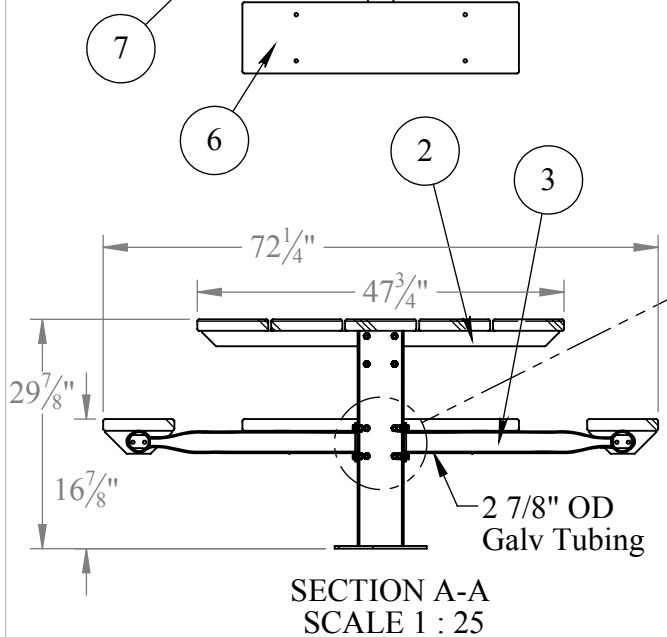
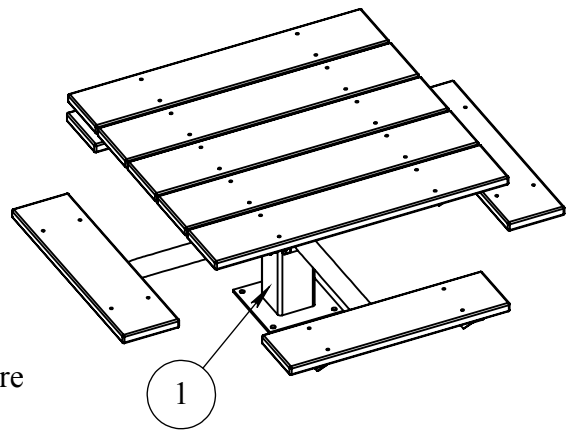


ITEM NO.	PART NUMBER	DESCRIPTION	QTY.
1	4SPTSM-SA1	4SPTSM PEDESTAL POST GALV	1
2	4SPTW-SA1	4SPT-Top Arm Assy Wood-Alum	2
3	4SPT-SA2	4SPT-SEAT ARM ASSEMBLY GALV	4
4	HFBOLT 0.5-13x1.25x1.25-N		24
5	HNUT 0.5000-13-D-N		24
6	3SQW-7	2"x 10" SYP TREATED SEAT PLANK	4
7	4SQW-7	2"x 10" SYP TREATED TOP PLANK	5



1. Attach (4) Seat Arm Assemblies, Flanged Nuts are on the Inside of the Square Tube.
  2. Attach the Top Arm Assemblies, Flanged Nuts are on the Inside of the Square Tube.
  3. Attach the Seat and Top Planks.
- Be Aware when Reaching Inside of Square Tube to Assemble Arms, Top Surface of Galvanized Edges may be Sharp**



CONFIDENTIAL DRAWING AND INFORMATION IS NOT TO BE COPIED OR DISCLOSED TO OTHERS WITHOUT THE CONSENT OF KAY PARK. SPECIFICATIONS ARE SUBJECT TO CHANGE WITHOUT NOTICE.

GENERAL NOTES:	UNLESS OTHERWISE SPECIFIED:	NAME	DATE		<b>Kay Park Rec</b> TITLE:
	DIMENSIONS ARE IN INCHES TOLERANCES: FRACTIONAL ± 1/32 BEND ± 1/2° THREE PLACE DECIMAL ± .005 DO NOT SCALE DRAWING	DRAWN	DAT		
	MATERIAL	ENG APPR.			DESC. SINGLE POST TABLE SQUARE SYP TREATED SURFACE MOUNT
		MFG APPR.			S:\CADDRWGS\Solidworks\Tables\SPT\Tables\
		LAST SAVED	6/12/2014 2:12:53 PM		SIZE <b>A</b>
		COMMENTS:			PART NO. 4SPTGWSM
	Sheet 1 of 1				REV