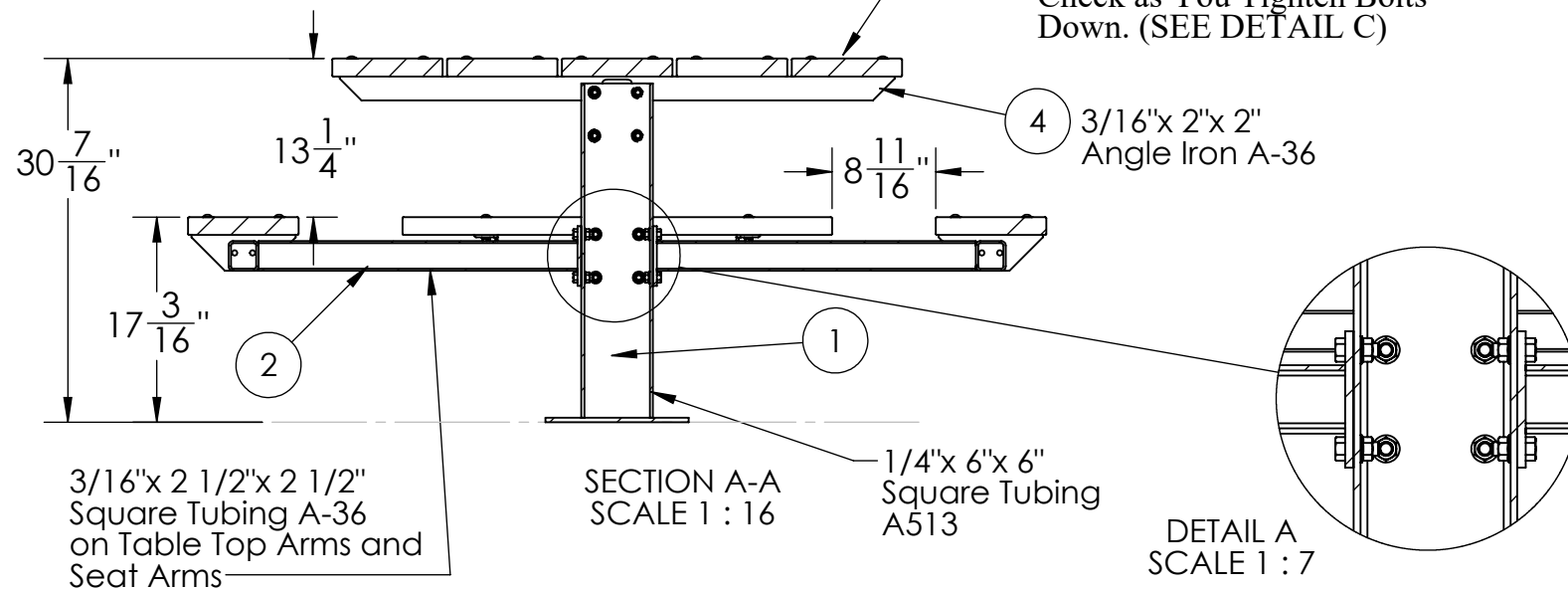


Recycled Polyethylene Plastic

REF NOTE #3 Make Sure Top Surfaces of Table Top Arms are Level and Square With Each Other Otherwise Top Planks Can Become Twisted and Look Uneven. Check as You Tighten Bolts Down. (SEE DETAIL C)



NO.	PART NUMBER	DESCRIPTION	MATERIAL	QTY.
1	4SPTSM-SA1	4SPT SURFACE MOUNT PEDESTAL		1
2	4SPT-SA2	SEAT ARM ASSY 22" SEAT MOUNT		4
3	FLANGEN-1/2	1/2"-13 FLANGED NUT		24
4	4SPTW-SA1	TOP ARM ASSY WOOD-ALUM-RP		2
5	3SQRP-7	2"x 10" RECYCLED PLASTIC SEAT PLANK	2"x 10" HDPE RECYCLED PLASTIC	4
6	4SQRP-7	2"x 10" RECYCLED PLASTIC PLANK	HDPE RECYCLED PLASTIC	5
7	RHSSNBOLT 0.375-16x2.25x1-S			36
8	HBOLT 0.5000-13x1.25x1.25-N	HEX BOLT 1/2"-13x 1 1/4"		24
9	Regular LW 0.375	LOCK WASHER 3/8"		36
10	HNUT 0.3750-16-D-N	HEX NUT 3/8"-16		36

Seat Arms, Table Top Arms, and Pedestal Posts are Either Zinc Galvanized or Are Powder Coated with Polyethylene TGIC Exterior Coating

CHECK WITH LOCAL BUILDING CODES CONCRETE SPECIFICATIONS

GENERAL NOTES		DIMENSIONS ARE IN INCHES TOLERANCES: LINEAR: $\pm 1/16$ ANGULAR: $\pm 1^\circ$		SHEET SIZE B		SCALE 1:24		REV		K Industries, Inc.	
		CONFIDENTIAL DRAWING. INFORMATION IS NOT TO BE COPIED OR DISCLOSED TO OTHERS WITHOUT CONSENT OF KAY INDUSTRIES. SPECIFICATIONS SUBJECT TO CHANGE WITHOUT NOTICE.		DRAWN BY		3/9/2017		DESC:			
				APPROVED				MATL:			
				LAST SAVED		carl		3/29/2018		PART NO: 4SPTGRPSM	
PATH TO PART OR ASSM - 4SPTGRPSM		S:\CADDRWGS\Solidworks\Tables\SPT\Tables\		Configuration - Square Surface Mount (Frame)		3/29/2018 08:35:35		SHEET 1 OF 1			