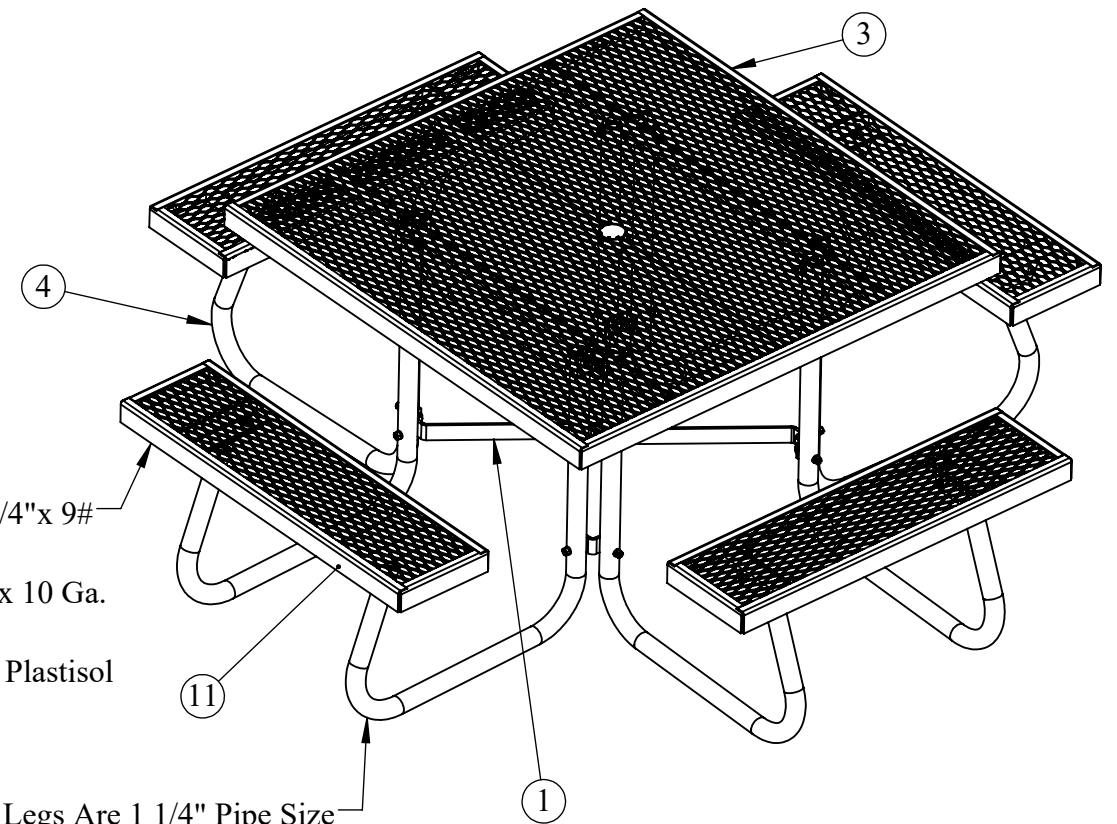
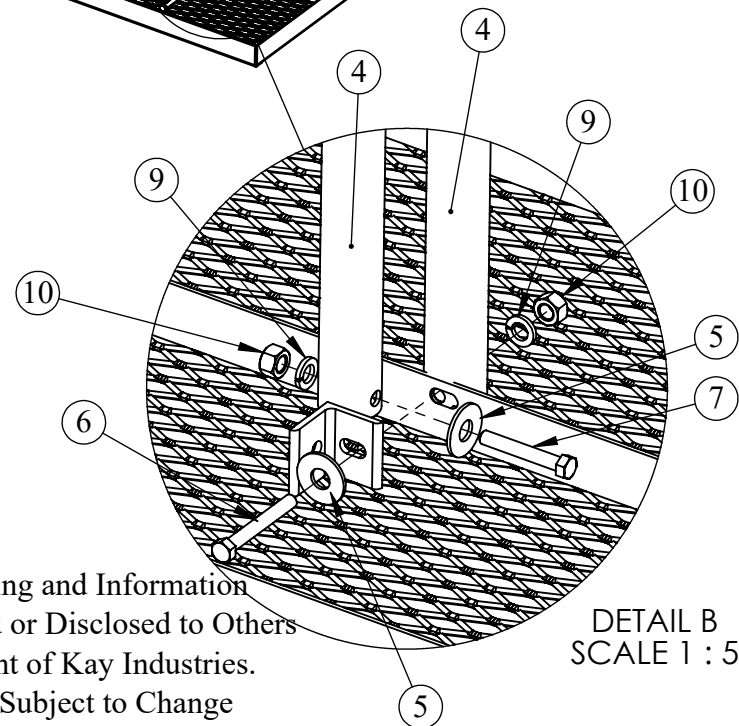
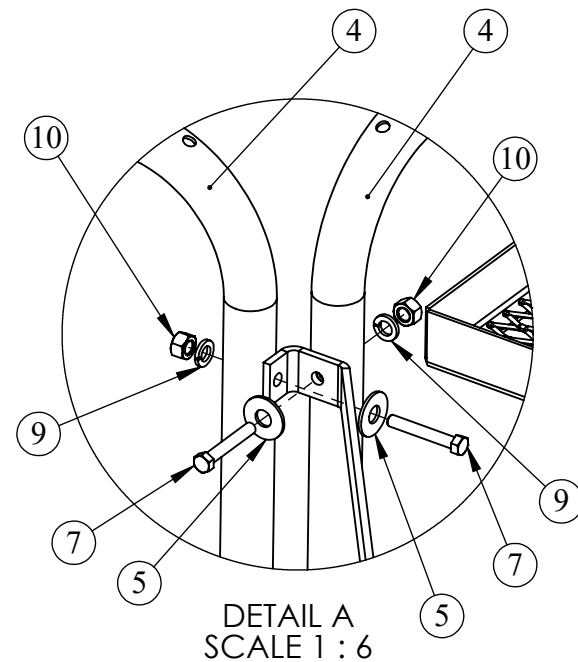
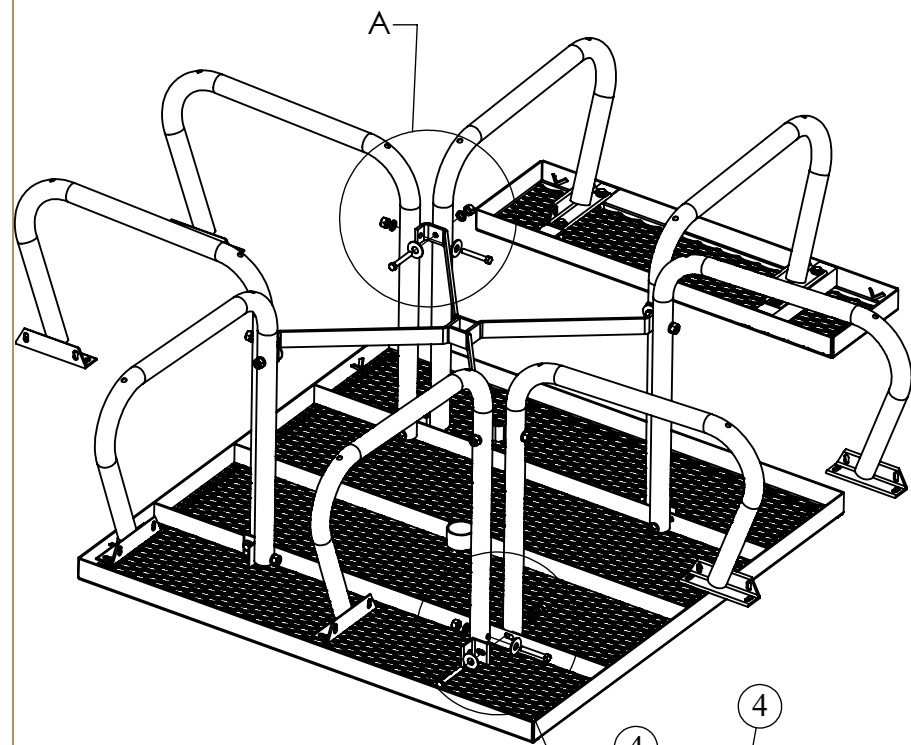


ITEM NO.	PART NUMBER	DESCRIPTION	QTY.
1	SQ-SA2	SQUARE SPIDER SUB ASSY	1
2	SQ-66	SQ. TOP ATTACHMENT ANGLE	4
3	SQV-9	4 Ft. SQUARE VP TOP	1
4	RTR-SA1	1 5/8" RTR LEG ASSEMBLY	8
5	Regular FW 0.375	REGULAR FLAT WASHER 3/8"	33
6	HBOLT 0.3750-16x3x1-N	HEX HEAD BOLT 3/8"-16x 3"	4
7	HBOLT 0.3750-16x2.5x1-N	HEX HEAD BOLT 3/8"-16x 2 1/2"	12
8	HBOLT 0.3750-16x1.5x1-N	HEX HEAD BOLT 3/8"-16x 1 1/2"	16
9	Regular LW 0.375	REGULAR LOCK WASHER 3/8"	32
10	HNUT 0.3750-16-D-N	HEX NUT 3/8"-16	32
11	3IV-8	3 Ft. VP SEAT	4



Tops and Seats Are 3/4"x 9# Expanded Metal.
Borders Are 3/4"x 2"x 10 Ga. Steel.
Coated with Vinylast Plastisol

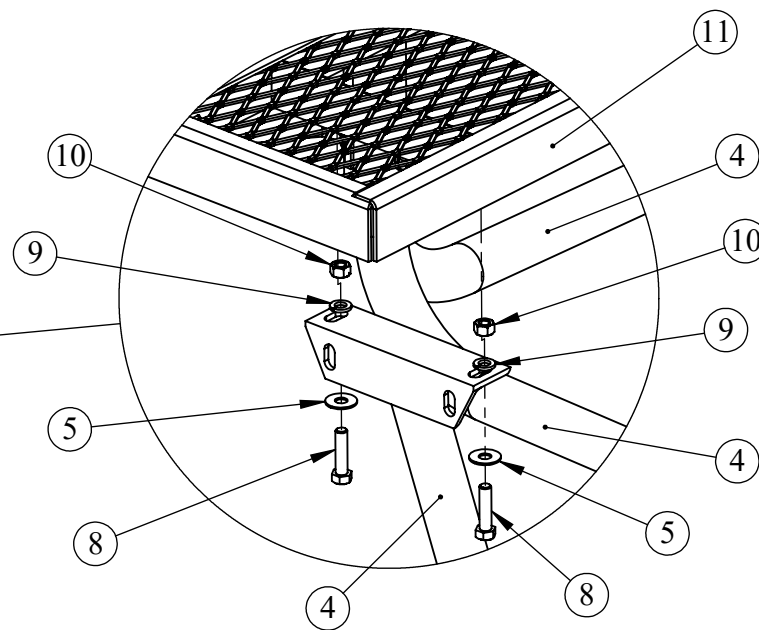
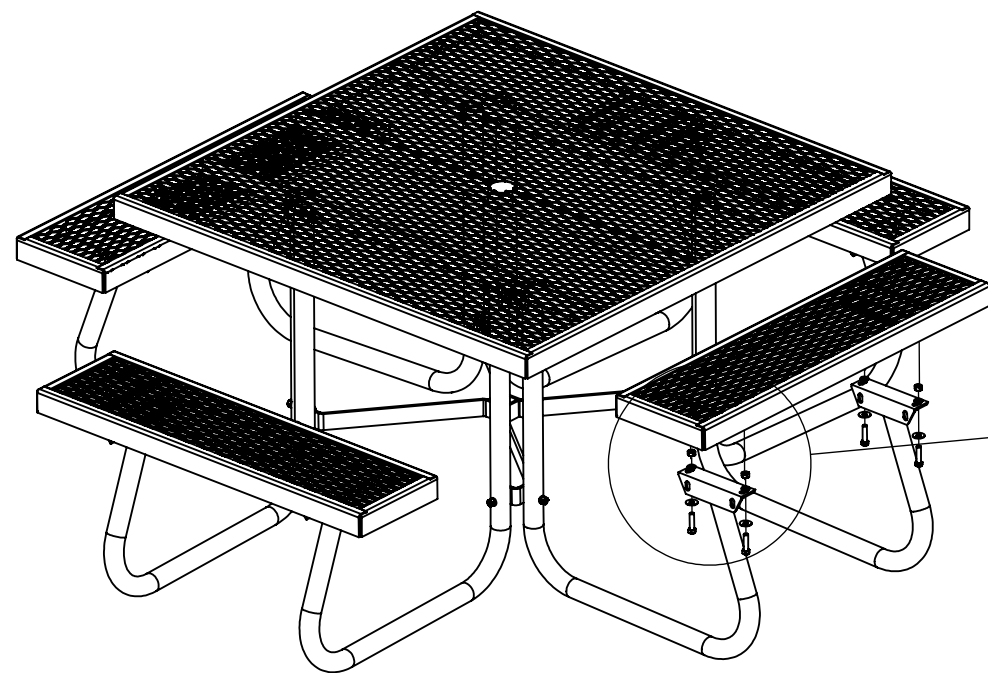
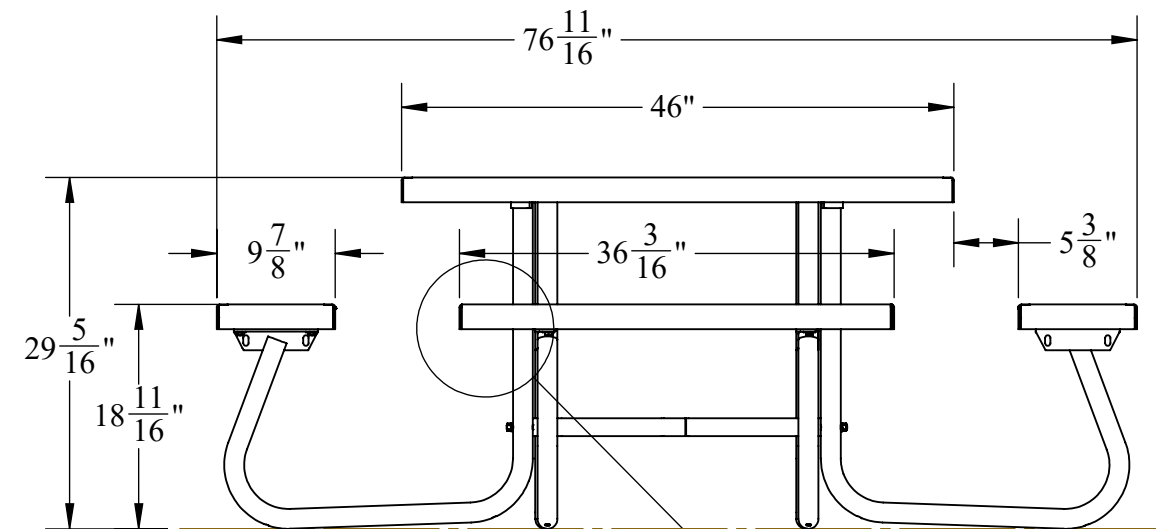
Table Legs Are 1 1/4" Pipe Size
1 5/8" OD Schedule 10 Pipe Which Has .109 Wall Thickness.
Legs Can Be Hot Dip Galvanized or Powder Coated Finish After Fabrication

1. Place the Table Top Upside Down on a Relatively Flat Surface Such as the Corrugated Card Board that the Product Came in.
2. Assemble the Table Legs as Shown in **DETAIL B**, Make Sure the 3" Long Hex Head Bolt is Used Where the Slots Line Up. Finger Tighten the Bolts and Nuts at This Time.
3. Next Attach the Spider Cross Bracing to the Bottom Part of the Legs. Start with One Corner Using the 3/8"-16x 2 1/2" Hex Head Bolts, Washers, Lock Washers, and Nuts. Go to the Opposite Corner and Insert That Hardware. Do the same Procedure on the Other Set of Legs. Finger Tighten Hardware. **SEE DETAIL A**
4. Tighten the Nuts and Bolts that are Close to the Table Top First, Make Sure the Legs are Straight Up and Down. Tighten the Nuts and Bolts on the Cross Bracing Next.
5. Turn the Table Right Side Up to Attach the Seats to the Seat Brackets. **SEE SHEET 2 for DETAILS**

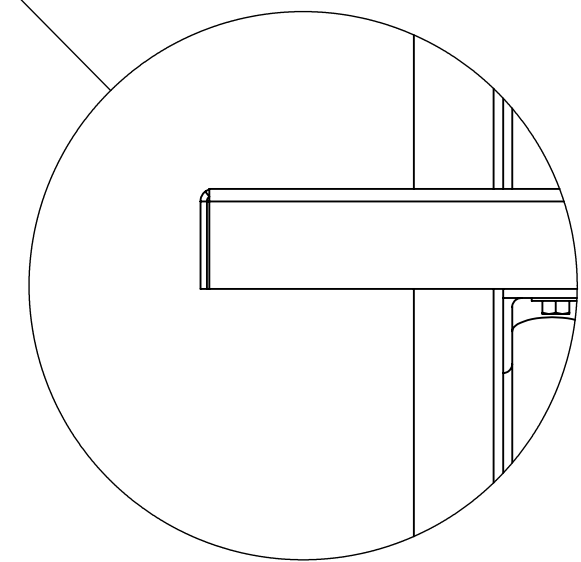
Confidential Drawing and Information is Not to be Copied or Disclosed to Others Without the Consent of Kay Industries. Specifications Are Subject to Change Without Notice.

GENERAL NOTES:		UNLESS OTHERWISE SPECIFIED:		NAME	DATE	K Industries, Inc.	
DIMENSIONS ARE IN INCHES TOLERANCES: FRACTIONAL ± 1/32 BEND ± 1/2° THREE PLACE DECIMAL ± .005 DO NOT SCALE DRAWING		DRAWN	DAT	10/23/2015	TITLE: 4SJ SERIES		
		CHECKED			DESC. 46" Square VP Top W/ 36" VP Seats		
		ENG APPR.			S:\CADDRWGS\Solidworks\Tables\SJ\		
MATERIAL		Last Saved	9/14/2016 7:55:00 AM		COMMENTS: APPROX. WGT: 155 LBS.		
SHEET 1 OF 2		SIZE	PART NO.		REV		
		B	4SJCVP				

ITEM NO.	PART NUMBER	DESCRIPTION	QTY.
1	SQ-SA2	SQUARE SPIDER SUB ASSY	1
2	SQ-66	SQ. TOP ATTACHMENT ANGLE	4
3	SQV-9	4 Ft. SQUARE VP TOP	1
4	RTR-SA1	1 5/8" RTR LEG ASSEMBLY	8
5	Regular FW 0.375	REGULAR FLAT WASHER 3/8"	33
6	HBOLT 0.3750-16x3x1-N	HEX HEAD BOLT 3/8"-16x 3"	4
7	HBOLT 0.3750-16x2.5x1-N	HEX HEAD BOLT 3/8"-16x 2 1/2"	12
8	HBOLT 0.3750-16x1.5x1-N	HEX HEAD BOLT 3/8"-16x 1 1/2"	16
9	Regular LW 0.375	REGULAR LOCK WASHER 3/8"	32
10	HNUT 0.3750-16-D-N	HEX NUT 3/8"-16	32
11	3IV-8	3 Ft. VP SEAT	4



DETAIL C
SCALE 1 : 6



DETAIL D
SCALE 1 : 4

Confidential Drawing and Information
is Not to be Copied or Disclosed to Others
Without the Consent of Kay Industries.
Specifications are Subject to Change
Without Notice

GENERAL NOTES:		UNLESS OTHERWISE SPECIFIED:		NAME	DATE		Kay Park Rec	
DIMENSIONS ARE IN INCHES		DRAWN		DAT	10/23/2015		TITLE: 4SJ SERIES	
TOLERANCES:		CHECKED				DESC. 46" Square VP Top W/ 36" VP Seats		
FRACTIONAL ± 1/32		ENG APPR.				S:\CADDRWGS\Solidworks\Tables\SJ\		
BEND ± 1/2°		MFG APPR.				SIZE	PART NO.	REV
THREE PLACE DECIMAL ± .005		Last Saved			9/14/2016 7:55:00 AM	B	4SJCVP	
DO NOT SCALE DRAWING		COMMENTS:		APPROX. WGT: 155 LBS.				
MATERIAL		SHEET 2 OF 2						