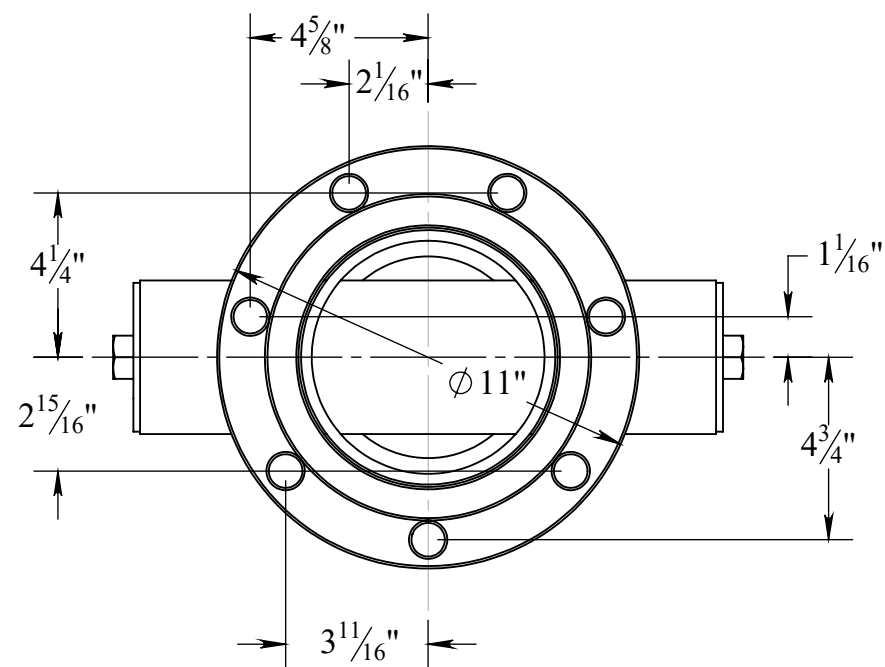


NO.	PART NUMBER	DESCRIPTION	MATERIAL	QTY.
1	DPH-903	6" PIPE WELDBEND FLANGE CLASS 150		2
2	DPH-901	DOG HYDRANT MAIN POST	6" PS 6 5/8" DIA. OD .280 WALL SCH 40 TUBING	1
3	DPH-902	4" LONG HYDRANT PIPE PLUG	3 1/2" PS 4" DIA. OD .226 WALL SCH 40	1
4	DPH-905	DOMED END CAP	6" PIPE SIZE TYPE C WELD	1
5	DPH-906	DOG HYDRANT TOP CAP	1 3/4" OD 12 GA (.109) ROUND MECH TUBING A-513	1
6	DPH-904	DOG HYDRANT ARM END CAP 3 7/8" DIA.	7 GA. SHEET STEEL A-36	2
7	HBOLT 0.7500-10x1x1-N	HBOLT 0.7500-10x1x1-N		2
8	HBOLT 0.6250-11x1x1-N	5/8"-11x 1" HEX HEAD BOLT		1
9	HNUT 0.7500-10-B-N	3/4"-10 HEX NUT		7
10	Regular FW 0.625	5/8" REG FLAT WASHER		1
11	HBOLT 0.7500-10x1.75x1.75-N	3/4"-10x 1 3/4" HEX HEAD BOLT		7
12	DPH-907	HYDRANT COLLAR 21 1/2"	1/4"x 1" FLAT A36	1



**Recommend Using 12" Dia. x 16" Deep Concrete Pylon for Hydrant Footing
Consult Local Building Codes For Soil and Concrete Requirements**

UNIT WGT: 88 LBS.

GENERAL NOTES

DIMENSIONS ARE IN INCHES
TOLERANCES: LINEAR: ± 1/16"
ANGULAR: ± 1°

CONFIDENTIAL DRAWING.
INFORMATION IS NOT TO BE COPIED OR
DISCLOSED TO OTHERS WITHOUT
CONSENT OF KAY INDUSTRIES.
SPECIFICATIONS SUBJECT TO CHANGE
WITHOUT NOTICE.

SHEET SIZE
B

DRAWN BY
DAT

APPROVED

LAST SAVED
davet

SCALE
1:8

REV



K Industries, Inc.

DESC: DOG PARK FIRE HYDRANT DOG PARK FIRE HYDRANT

MATL:

PART NO: K9PFH